



# Project GOALS

Greater Opportunities to Advance Lifelong Success

An Advanced Technological Education targeted research project

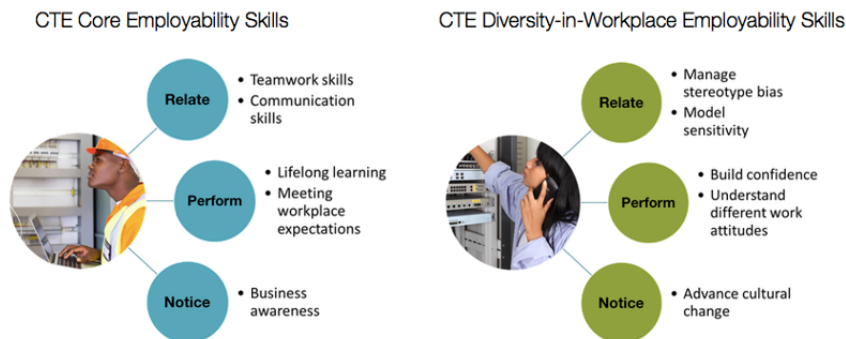
Contacts: Louise Yarnall, PI, [louise.yarnall@sri.com](mailto:louise.yarnall@sri.com)  
Alexandra Duran, Co-PI, [Alexandra.Duran@sjeccd.edu](mailto:Alexandra.Duran@sjeccd.edu)

### Objectives:

- Study how to foster a programmatic approach to employability skills development
- Support rapid creation and testing of specific methods to teach employability skills
- Measure and compare the growth in selected employability skills, and
- Produce reusable methods, tools, and resources to enable program scalability

### Partners:

- SRI Education, Menlo Park, CA
- San José-Evergreen Community College District, San Jose, CA
- Lyon Associates, Capitola, CA (Evaluator)



Website with Handbook & Resources is here: <https://employabilityskills.org>



#### Year One

Give 2 college Advanced Manufacturing faculty leads develop techniques & tools to develop these skills; Help them select skills and approaches, and then test and refine these in their classes



#### Year Two

Expand the employability skills techniques & tools to all college Advanced Manufacturing faculty members; Help them to use these techniques and tools, and then gather data on student learning



#### Year Three

Engage college Advanced Manufacturing faculty members in sharing your employability skills techniques, tools, and student learning data



SRI Education™

This work is supported by the National Science Foundation under DUE#2000881  
Any opinions, findings, and conclusions or recommendations expressed in this material are those of the author(s) and do not necessarily reflect the views of the NSF.