

ONE PAGERS

Simple and Engaging Reporting

Emma Perk
Lyssa Wilson Becho

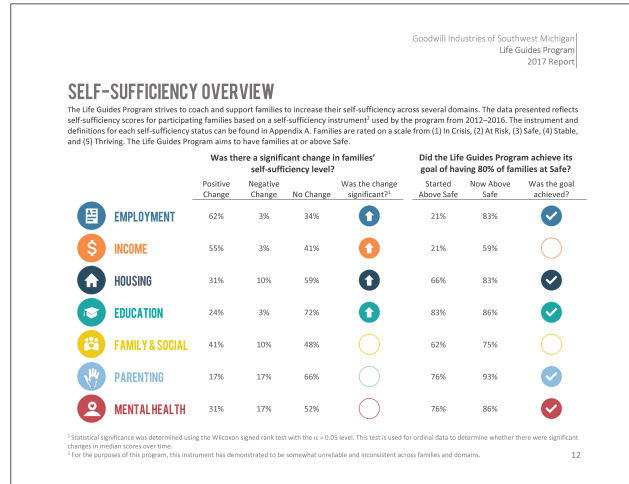
SLIDES:
bit.ly/EvaluATE-AEA



WHAT?
is a one pager

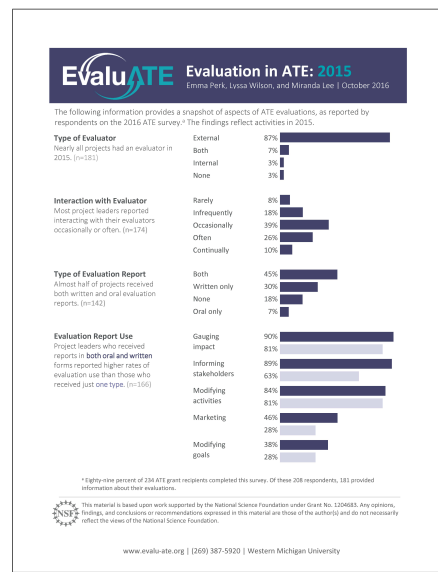
WHAT?

is a one pager



WHAT?

is a one pager



WHAT?

is a one pager

Repackaging evaluation reports for maximum impact

Emma Perk & Lyssa Wilson | HITEC | July 2017
bit.ly/EVALUATE-HITEC

It's not about making the documents pretty, it's about increasing engagement, understanding, and use.

Overview & Steps

Repackaging evaluation reports involves breaking up a long form evaluation report into digestible pieces to target different audiences and their specific information needs.

- 1 Identify your audience
- 2 Identify your key data
- 3 Identify the best platform
- 4 Sketch out your idea
- 5 Get feedback on drafts
- 6 Share your results

4 x 4 A Model for Knowledge Content

Different audience members have different information needs. Read more here bit.ly/4x4-shander.

- The Water Cooler**
Quick snippets. Succinct. Direct. Compelling.
- The Café**
A longer conversation.
- The Research Library**
Longer, in-depth research and data.
- The Lab**
Interaction with data.

Software, Guides, & Templates

Good design isn't limited to fancy, expensive software. Try these widely accessible or free platforms.

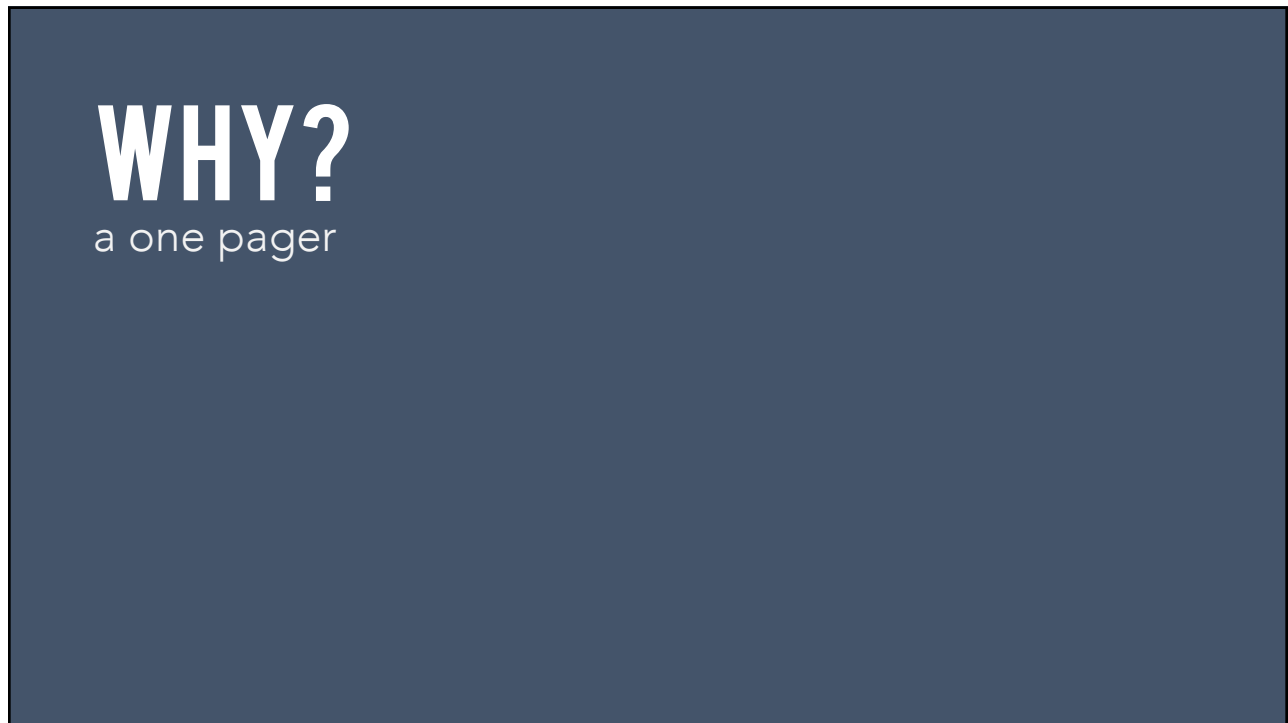
Software	Best for	Guides & Templates
Microsoft PowerPoint	✓ Slide decks ✓ One-pagers	duarte.com/slidedocs slidescarival.com
Microsoft Word	✓ Long form reports	bit.ly/Mword-tips
Microsoft Excel	✓ Dashboards ✓ Graphs	ankemery.com/excel
Canva canva.com	✓ Social media ✓ Postcards	bit.ly/perk_nov15
Adobe Spark spark.adobe.com	✓ Videos ✓ Web docs	bit.ly/Perk_DIY-Videos

Created for EvaluAte by Lyssa Becho & Emma Perk (2017)

WHAT?

is a one pager

Created for Goodwill Life Guides by Lyssa Becho & Kelly Robertson (2017)



HOW?

to create a
one pager

HOW?

to create a
one pager

1. Identify the **audience**
2. Identify the **purpose**
3. Prioritize the **information**
4. Choose a **grid**
5. Draft the **layout**
6. Create an intentional **visual path**
7. Create a purposeful **hierarchy**
8. Use **white space**
9. Get **feedback**
10. Triple check **consistency**

HOW?

to create a one pager

HANDOUT:
bit.ly/EvaluATE-AEA

ONE PAGERS

Simple and Engaging Reporting

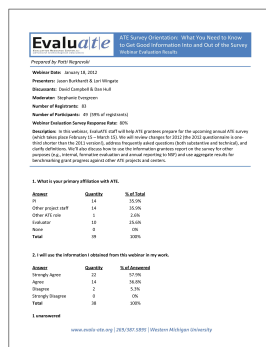
Emma Perk & Lyssa W. Becho

1. Identify the **audience**
2. Identify the **purpose**
3. Prioritize the **information**
4. Choose a **grid**
5. Draft the **layout**
6. Create an intentional **visual path**
7. Create a purposeful **hierarchy**
8. Use **white space**
9. Get **feedback**
10. Triple check **consistency**

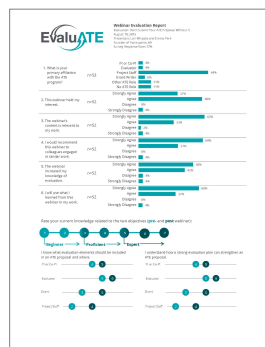


HOW?

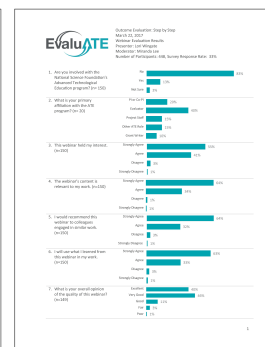
to create a one pager



2012



2015



2017

HOW?

to create a
one pager

ONE PAGERS

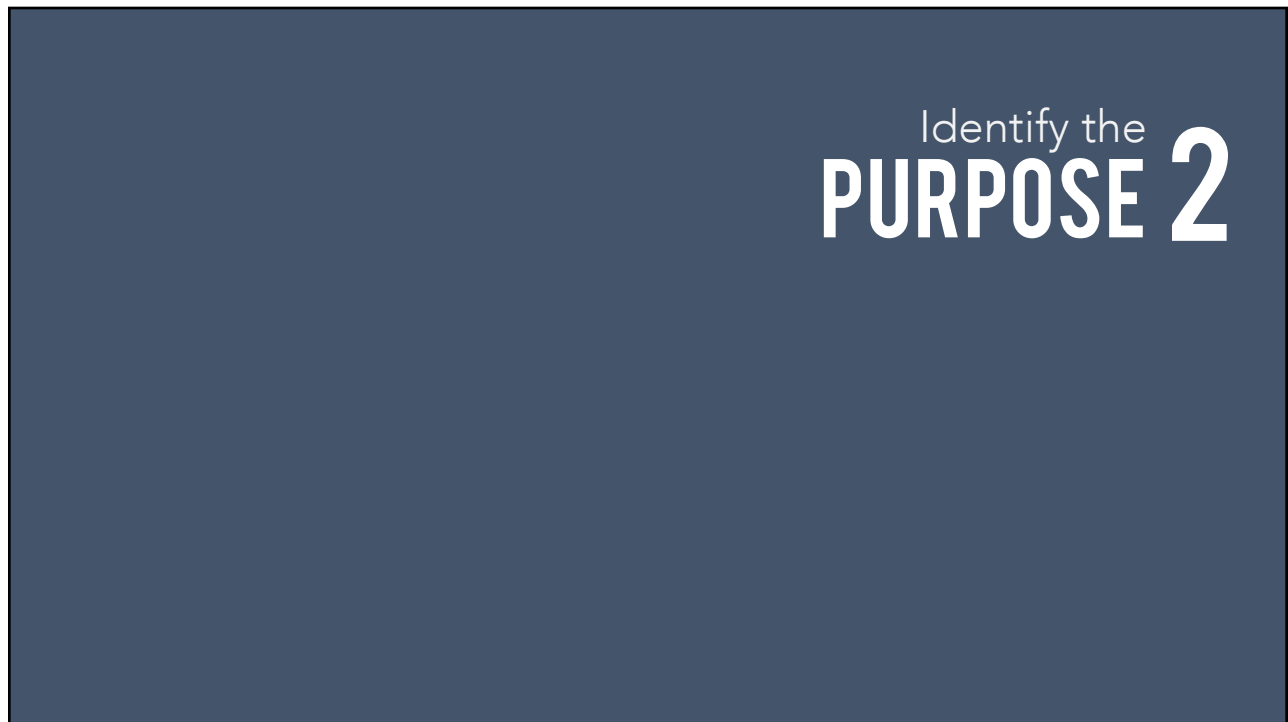
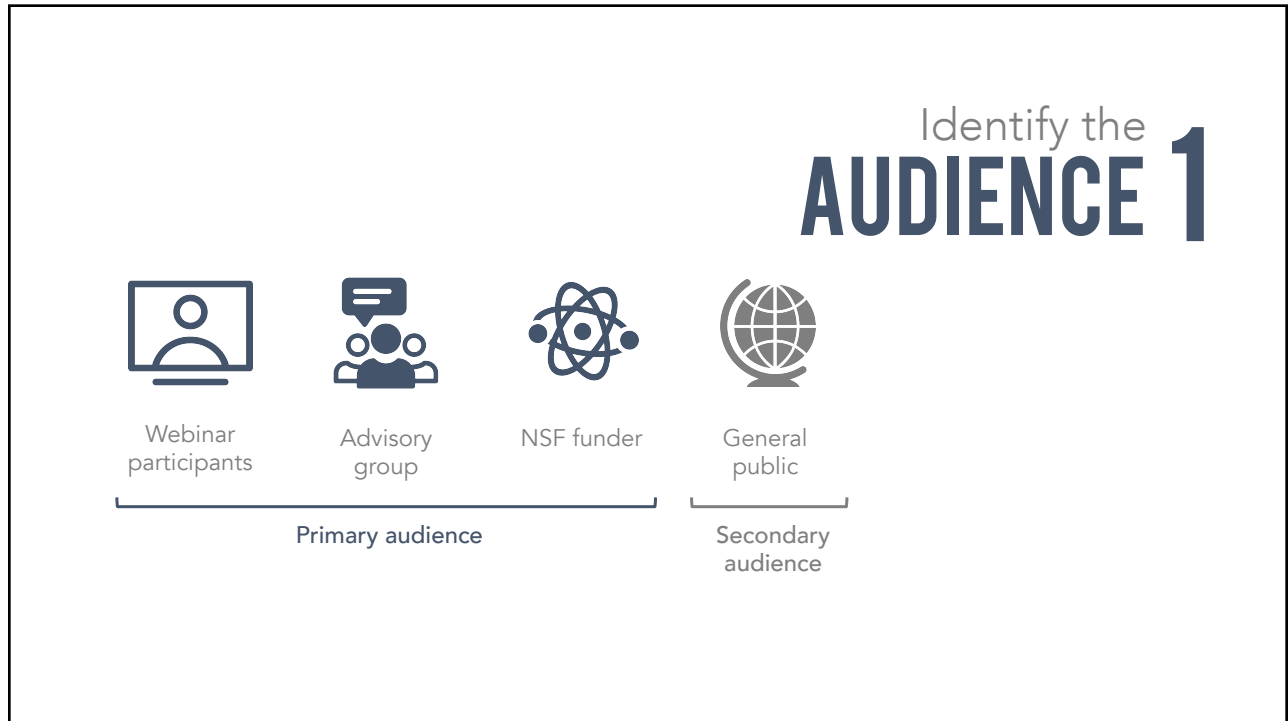
Simple and Engaging Reporting

Emma Perk & Lyssa W. Becho

1. Identify the **audience**
2. Identify the **purpose**
3. Prioritize the **information**
4. Choose a **grid**
5. Draft the **layout**
6. Create an intentional **visual path**
7. Create a purposeful **hierarchy**
8. Use **white space**
9. Get **feedback**
10. Triple check **consistency**



Identify the
AUDIENCE 1

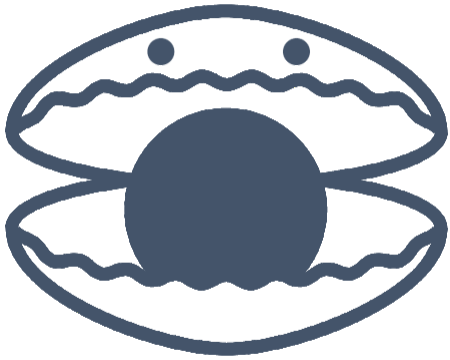


Identify the
PURPOSE 2

Purpose Statement:

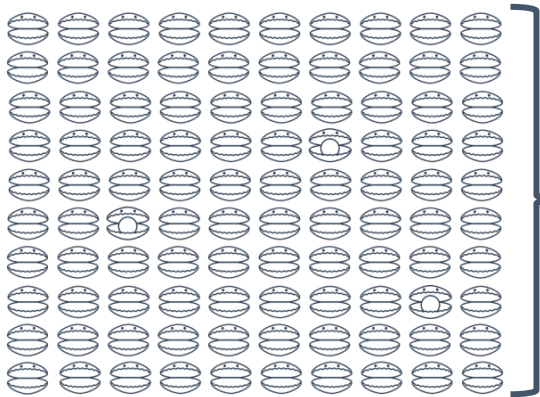
To show the webinar audience reach and to summarize initial reactions and learning outcomes.

Prioritize the
INFORMATION 3



Prioritize the
INFORMATION 3

THE OYSTER
Cole Nussbaumer Knaflic
Storytelling with Data

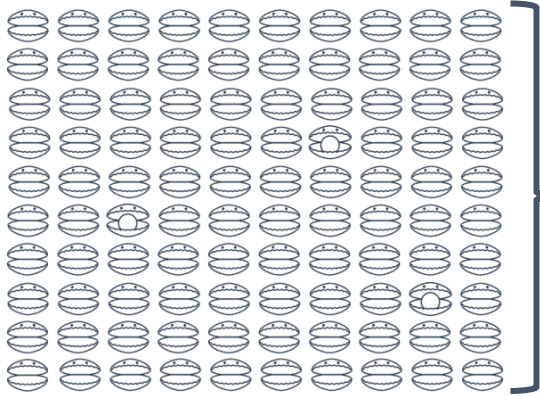


Prioritize the
INFORMATION 3


DATA COLLECTED

THE OYSTER
Cole Nussbaumer Knaflic
Storytelling with Data

Prioritize the
INFORMATION 3

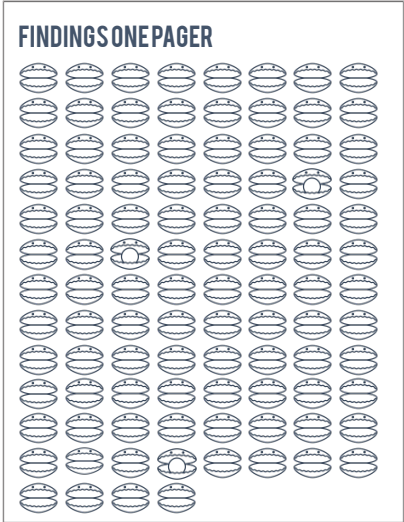


MEANINGFUL DATA



THE OYSTER
Cole Nussbaumer Knaflic
Storytelling with Data

Prioritize the
INFORMATION 3

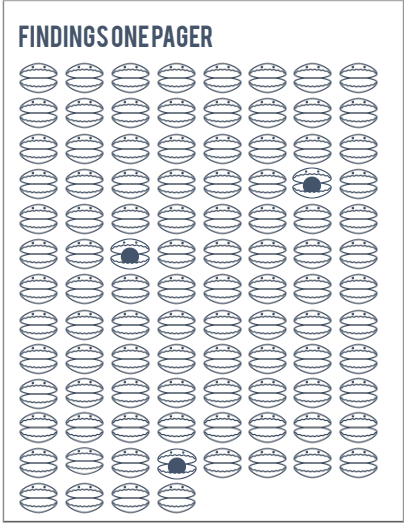


FINDINGS ONE PAGER

REPORT ALL DATA COLLECTED

THE OYSTER
Cole Nussbaumer Knaflic
Storytelling with Data

Prioritize the **INFORMATION 3**

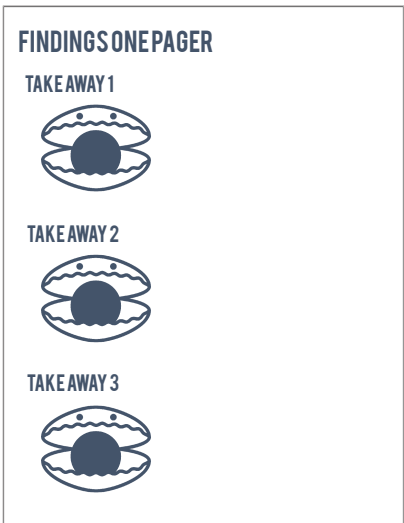


FINDINGS ONE PAGER

PROVIDING CALL OUTS ON MEANINGFUL DATA

THE OYSTER
Cole Nussbaumer Knaflic
Storytelling with Data

Prioritize the **INFORMATION 3**



FINDINGS ONE PAGER

TAKE AWAY 1

TAKE AWAY 2

TAKE AWAY 3

USE ONE PAGER TO REPORT ON ONLY MEANINGFUL DATA

THE OYSTER
Cole Nussbaumer Knaflic
Storytelling with Data

1. Are you involved with the National Science Foundation's Advanced Technological Education program? (n= 129)

2. What is your primary affiliation with the ATE program? (n= 63)

3. This webinar held my interest:

4. The webinar's content is relevant to my work. (n= 142)

3. I would recommend this webinar to colleagues engaged in similar work. (n= 142)

4. I feel like what I learned from this webinar is applicable to my work. (n= 142)

5. What is your overall opinion of the quality of this webinar?

Prioritize the INFORMATION 3

1. Header Information- Title, Date, Logo, Overall n
2. Audience- Who is Attending?
3. Audience Satisfaction
4. Audience Perceived Relevance
5. Audience Perceived Quality
6. Footer information- Where to find more info?

1. Audience reach

2. Learning outcomes

3. Reactions

- overall quality
- satisfaction
- relevance

Prioritize the INFORMATION 3



Choose a
GRID 4

DOWNLOAD GRIDS:
bit.ly/EvaluATE-AEA

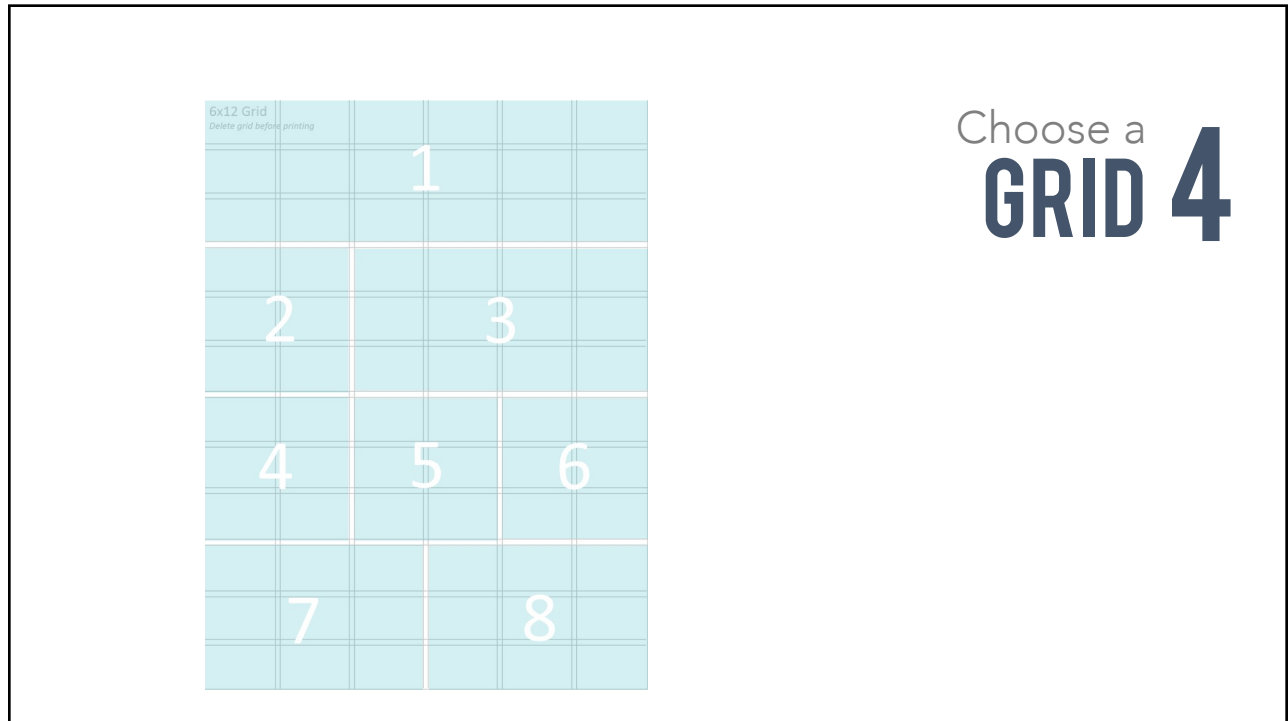
The complex block contains six grid templates arranged in two rows of three. Each grid is labeled with a number (1-6) and the text "Choose a grid for your reporting". The grids vary in size and layout: GRID 1 is a 2x2 grid; GRID 2 is a 3x3 grid; GRID 3 is a 4x4 grid; GRID 4 is a 4x5 grid; GRID 5 is a 5x5 grid; and GRID 6 is a 6x6 grid. To the right of the grids is the text "Choose a GRID 4" and below that, "DOWNLOAD GRIDS: bit.ly/EvaluATE-AEA".

Choose a **GRID 4**

The image displays six different grid layouts for selection. The first row contains three grids: a 2x2 grid, a 3x3 grid, and a 4x4 grid. The second row contains three grids: a 4x6 grid, a 6x4 grid, and a 6x6 grid. The 6x6 grid is shaded in light blue and has a large right-facing curly bracket next to it. Each grid has a small header in the top-left corner that reads "2x2 Grid" through "6x6 Grid" respectively, with the instruction "Delete grid before printing" below it.

Choose a **GRID 4**

The image displays a single 6x12 grid layout. The top-left cell contains the text "6x12 Grid" and "Delete grid before printing" below it. The rest of the grid is empty. To the right of the grid, the text "Choose a GRID 4" is displayed in a large, bold, blue font.

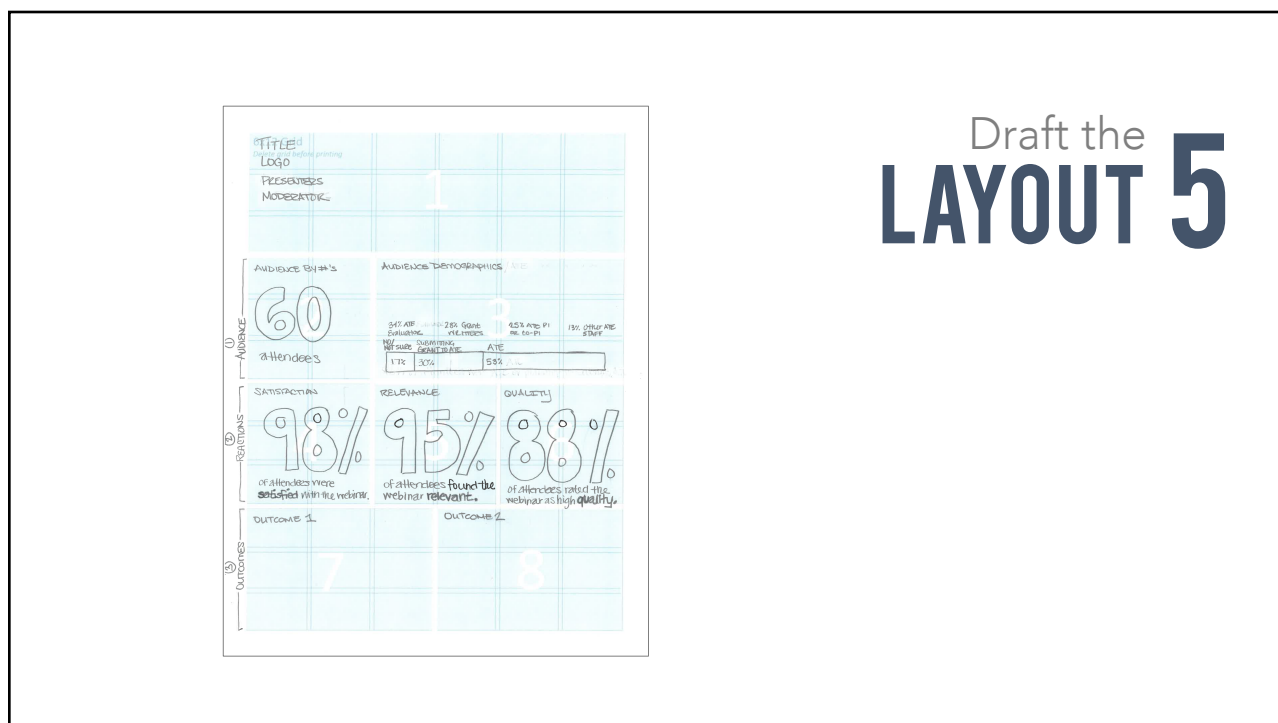


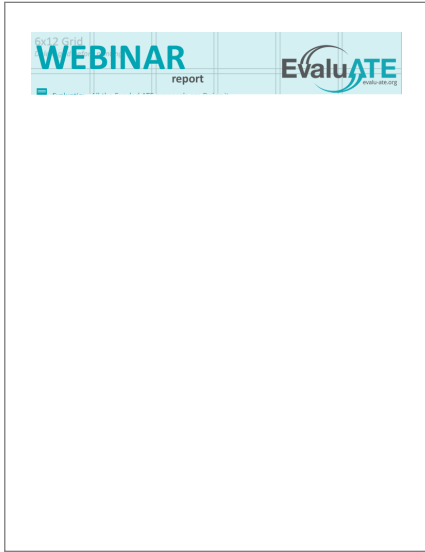
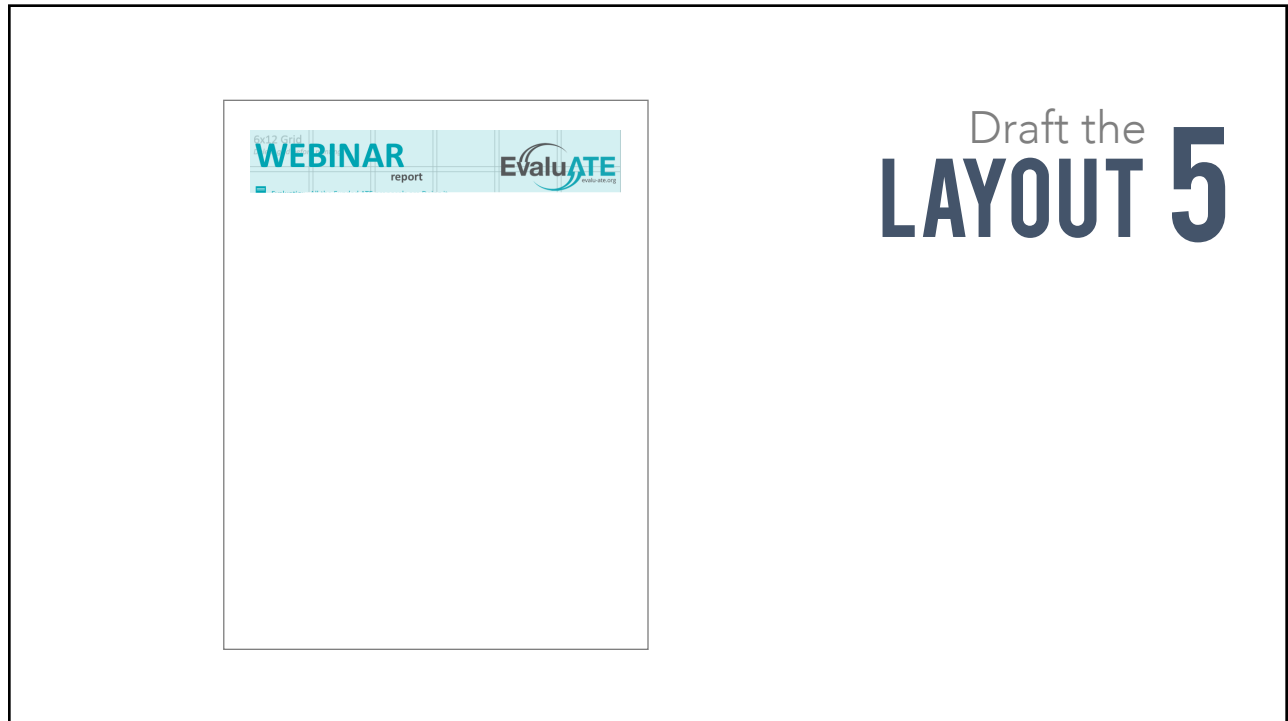
6x12 Grid
Delete grid before printing

		1			
2			3		
4		5		6	
7				8	

Choose a
GRID 4

Draft the
LAYOUT 5





Draft the
LAYOUT 5

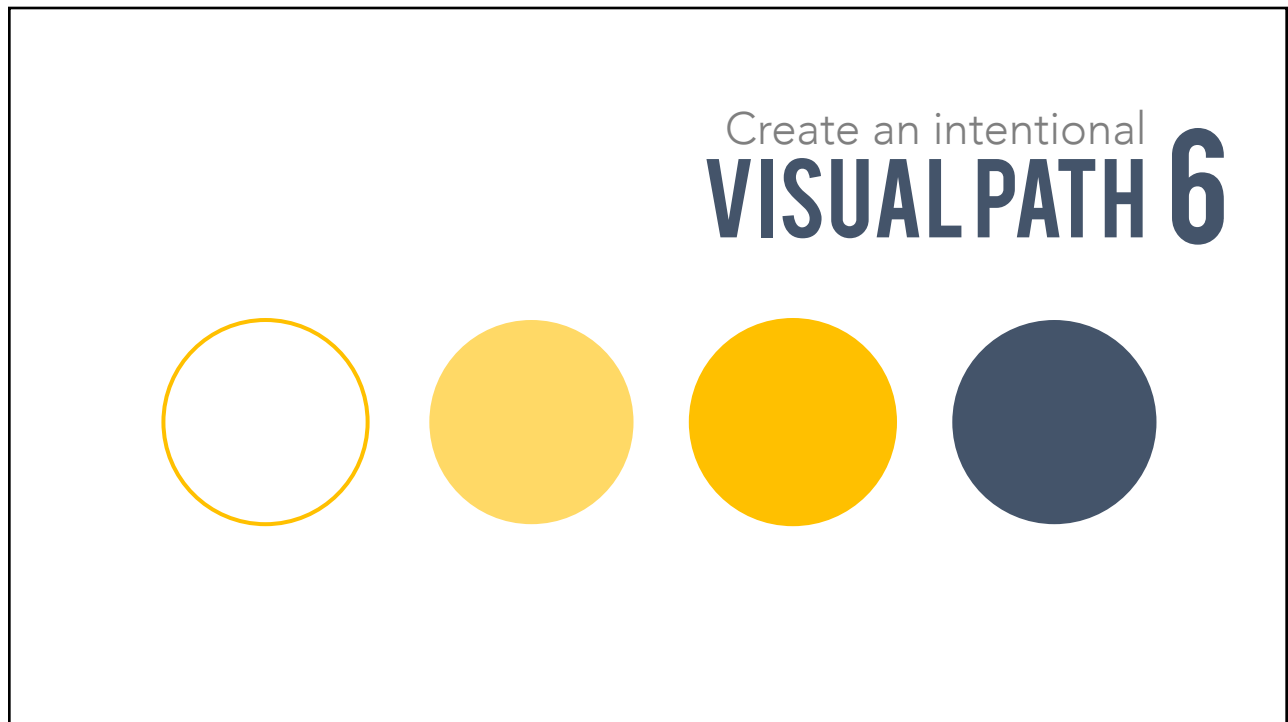
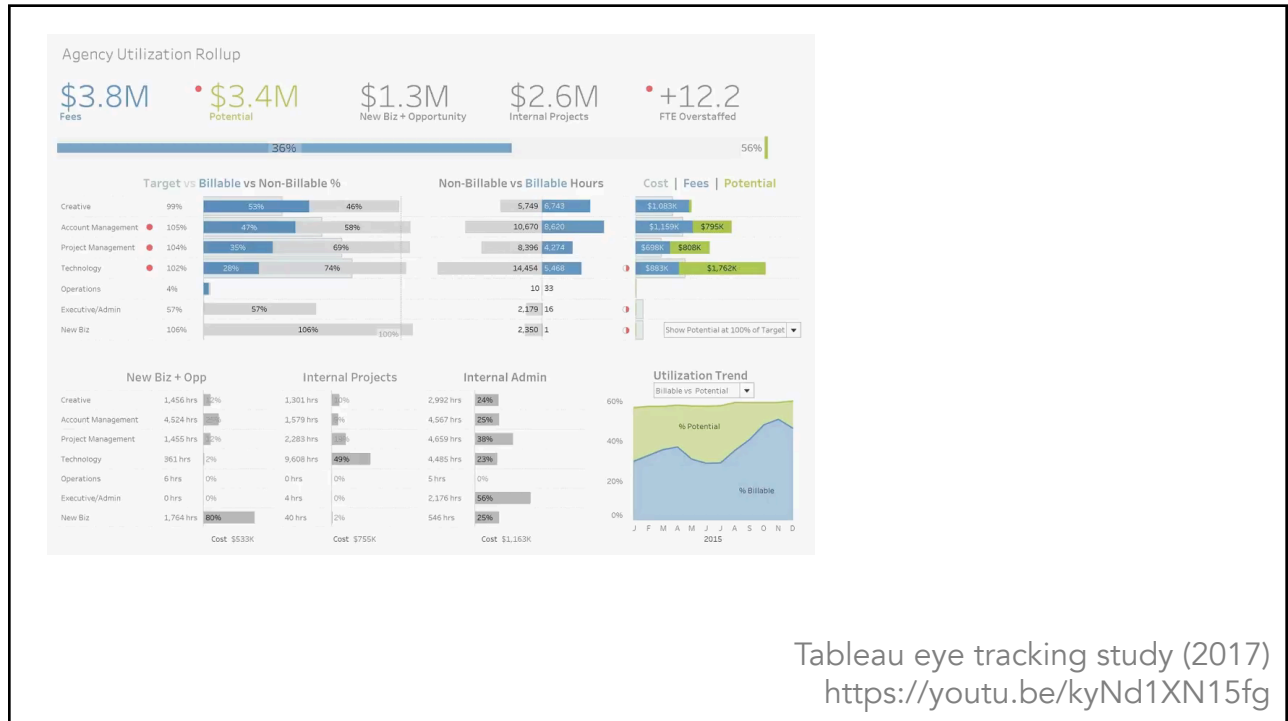


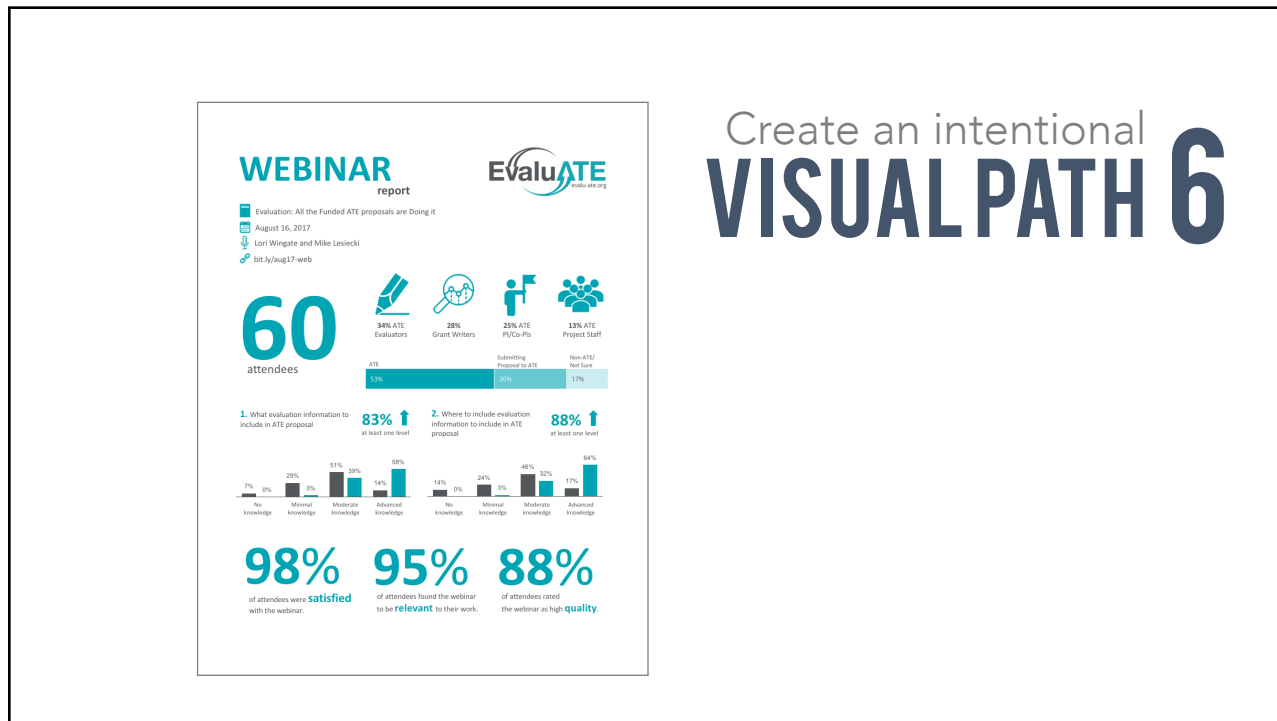
**VIDEO: CREATING A ONE PAGER
IN POWERPOINT**

<https://youtu.be/3HDmM5mWTyY>

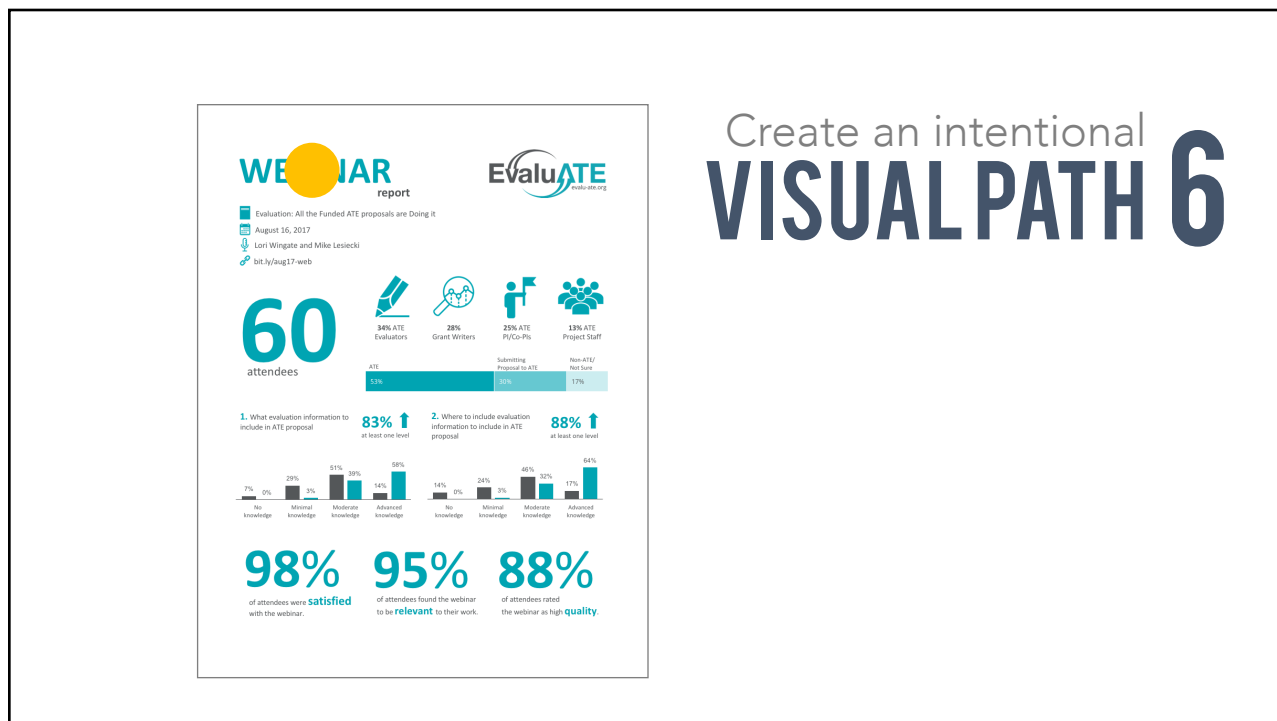
Create an intentional VISUAL PATH 6



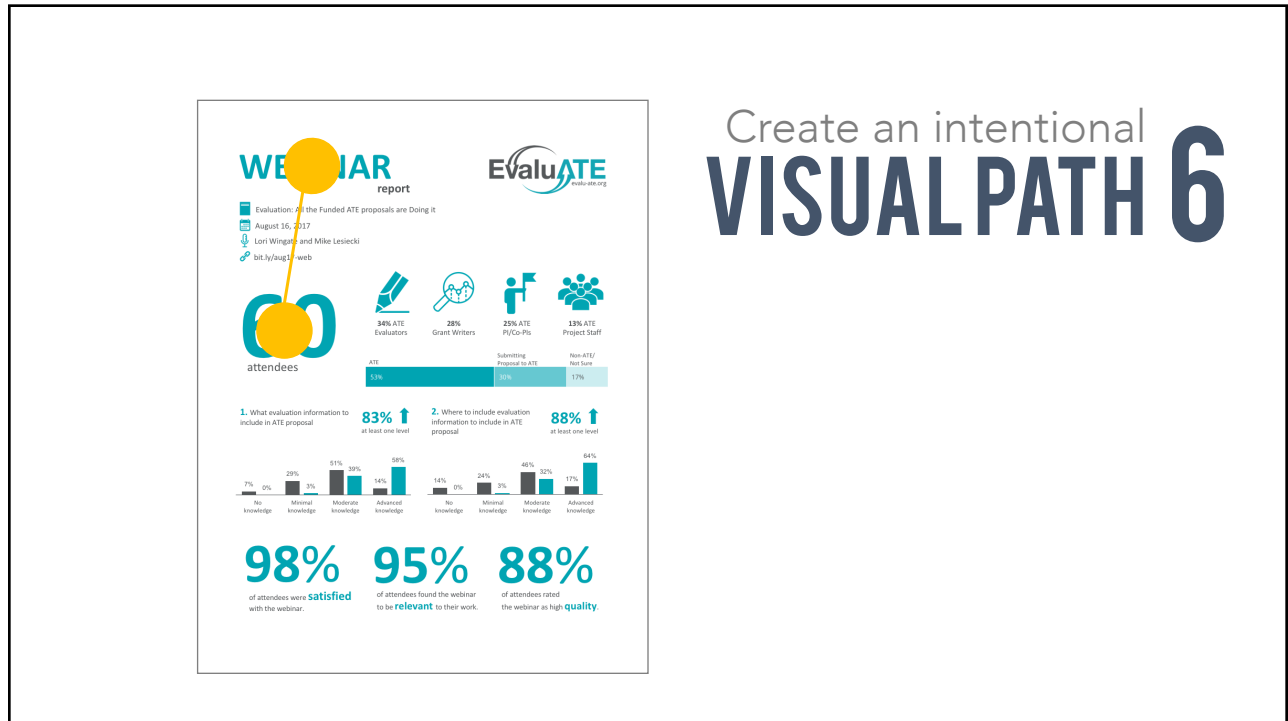




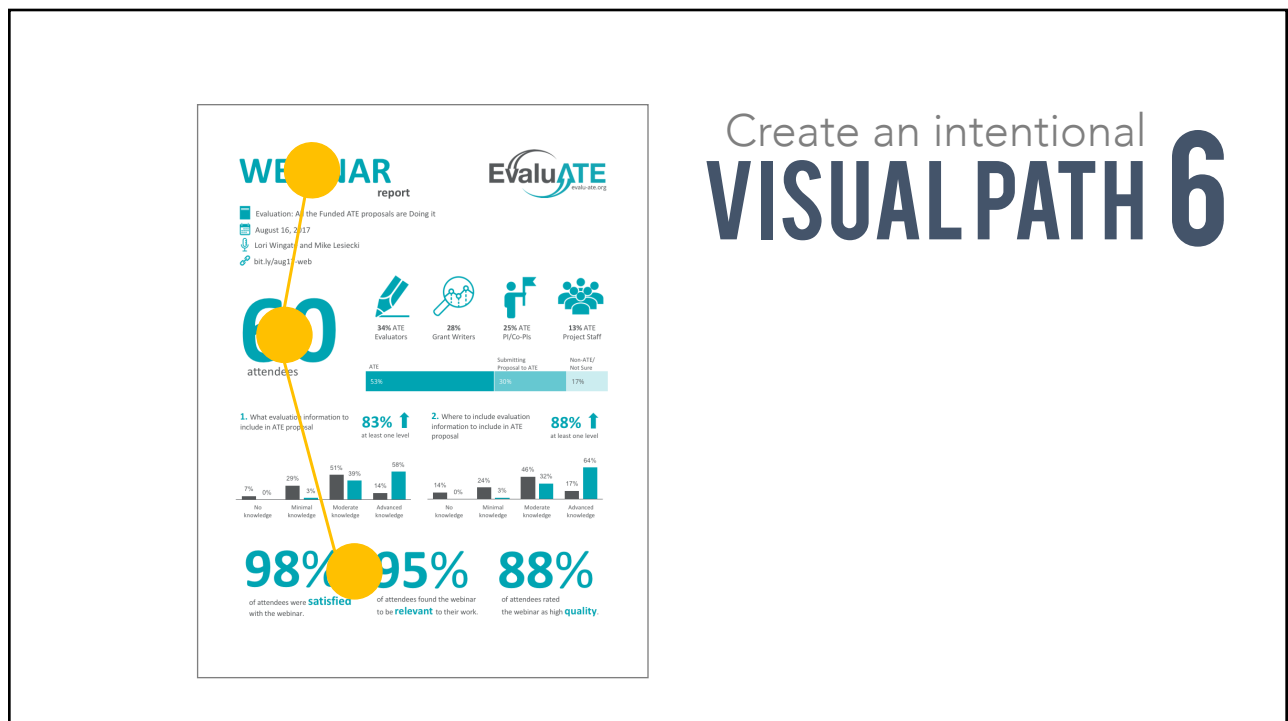
Create an intentional VISUAL PATH 6

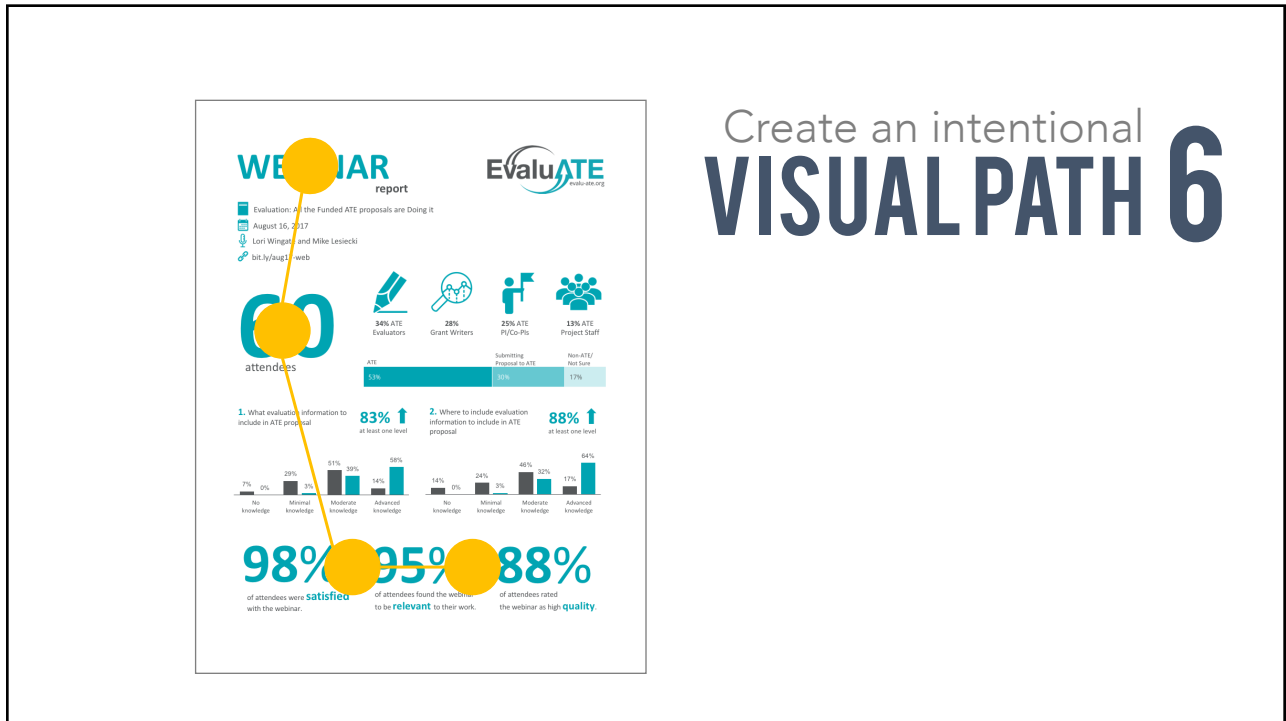


Create an intentional VISUAL PATH 6

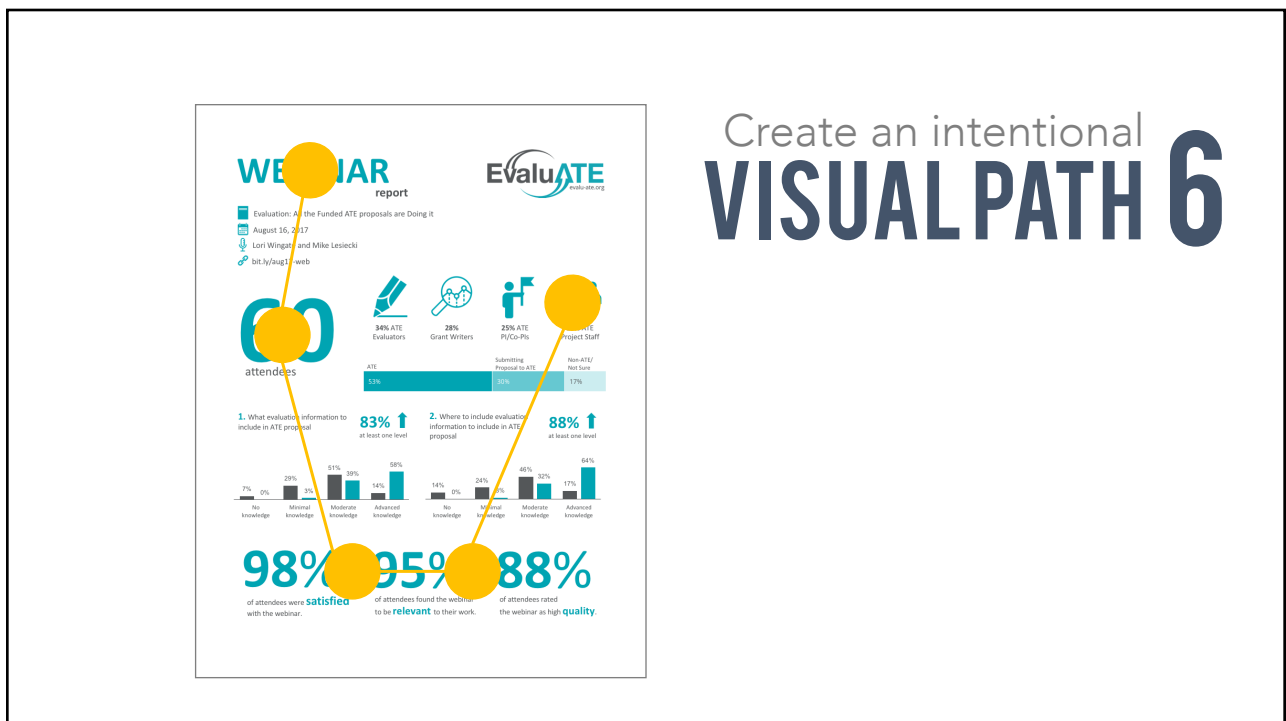


Create an intentional VISUAL PATH 6

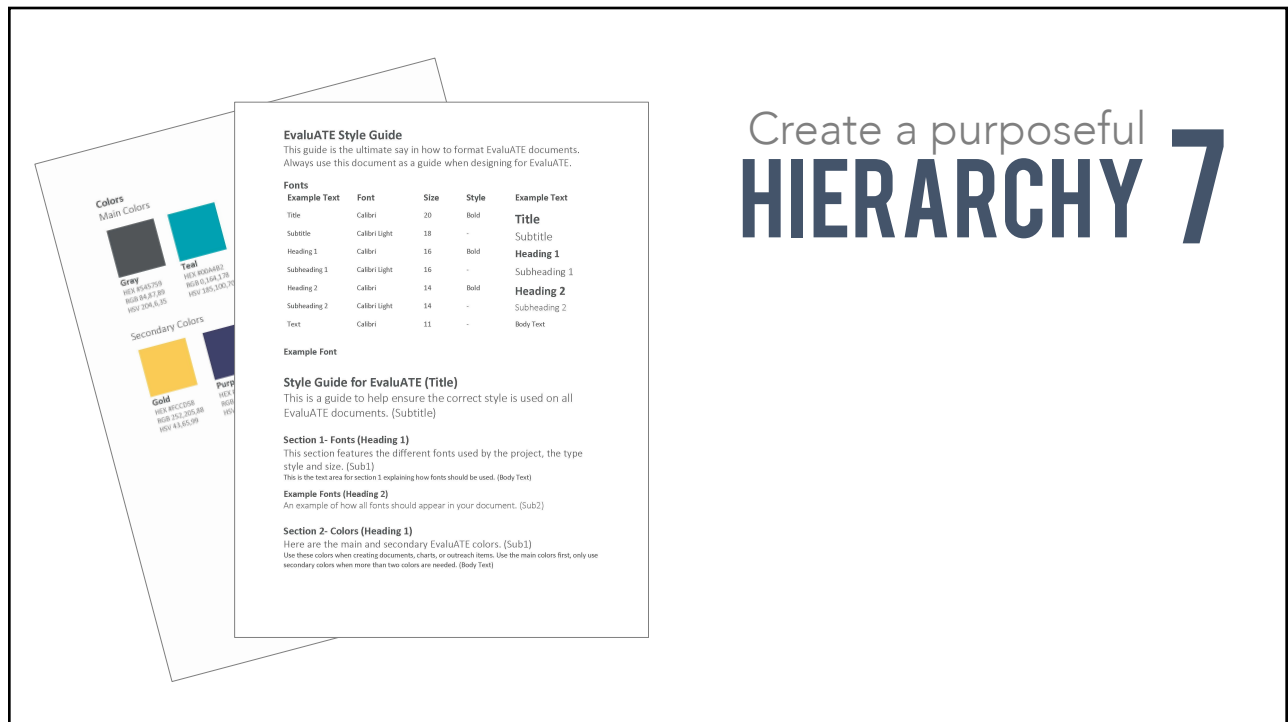




Create an intentional
VISUAL PATH 6

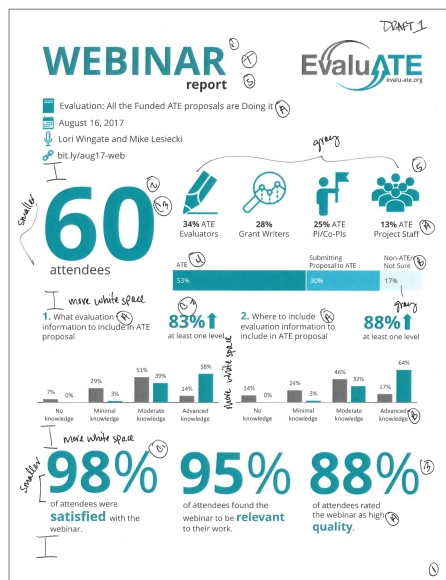


Create an intentional
VISUAL PATH 6

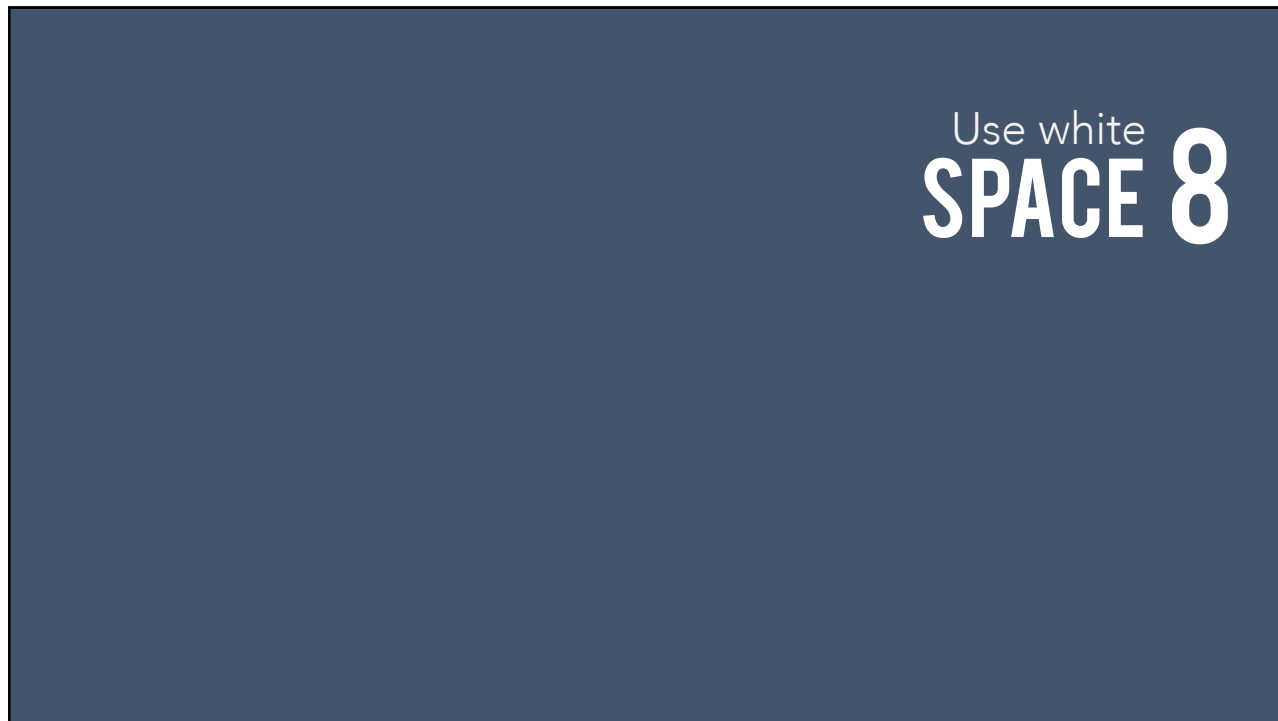


Create a purposeful HIERARCHY 7

<p>Title Calibri bold 20 pt</p> <p>Heading 1 Calibri bold 16 pt</p>	<p>Subtitle Calibri Light 18 pt</p> <p>Subtitle 1 Calibri Light 16 pt</p> <p>Body text Calibri 11 pt</p>	<p>Style Guide for EvaluATE</p> <p>This is a guide to help ensure the correct style is used on all EvaluATE documents.</p> <p>Section 1- Fonts</p> <p>This section features the different fonts used by the project, the type style and size.</p> <p>This is the text area for section 1 explaining how fonts should be used.</p>
---	--	---



Create a purposeful HIERARCHY 7



WEBINAR report

Evaluate ATE evaluate-ate.org

📄 Evaluation: All the Funded ATE proposals are Doing It
📅 August 16, 2017
👤 Lori Wingate and Mike Lesiecki
🔗 bit.ly/aug17-web

60 attendees

34% ATE Evaluators
28% Grant Writers
23% ATE FY/Co-PIs
15% ATE Project Staff

ATE 54%
Submitting Proposal to ATE 52%
Non-ATE/Not Sure 17%

1. What evaluation information to include in ATE proposal **83%** ↑ at least one level

No knowledge	7%
Minimal knowledge	29%
Moderate knowledge	3%
Advanced knowledge	51%
Advanced knowledge	39%
Advanced knowledge	58%

2. Where to include evaluation information to include in ATE proposal **88%** ↑ at least one level

No knowledge	14%
Minimal knowledge	15%
Moderate knowledge	24%
Advanced knowledge	3%
Advanced knowledge	45%
Advanced knowledge	35%
Advanced knowledge	17%
Advanced knowledge	64%

98% of attendees were **Satisfied** with the webinar.

95% of attendees found the webinar to be **relevant** to their work.

88% of attendees rated the webinar as high **quality**.

Use white
SPACE 8

Not enough white space

Too much white space

Use white
SPACE 8

Use white
SPACE 8

Use white
SPACE 8

Get
FEEDBACK 9

WEBINAR report

Evaluation: All the Funded ATE proposals are Doing it
 August 16, 2017
 Lori Wingate and Mike Lesiecki
bit.ly/aug17-web

60 attendees

54% ATE Evaluators
 28% Grant Writers
 25% ATE PI/Co-PIs
 13% ATE Project Staff

53% ATE
 50% Submitting Proposals ATE
 17% Non-ATE/ Not Sure

83% ↑ of attendees found evaluation information to include in ATE proposal at least one level.

88% ↑ of attendees found where to include evaluation information to include in ATE proposal at least one level.

98% of attendees were satisfied with the webinar.

95% of attendees found the webinar to be relevant to their work.

88% of attendees rated the webinar as high quality.

Get
FEEDBACK 9

WEBINAR report

Evaluation: All the Funded ATE proposals are Doing it
 August 16, 2017
 Lori Wingate and Mike Lesiecki
bit.ly/aug17-web

REACHED AN audience of **60** attendees

54% ATE Evaluators
 28% Grant Writers
 25% ATE PI/Co-PIs
 13% ATE Project Staff

53% ATE
 50% Submitting Proposals ATE
 17% Non-ATE/ Not Sure

83% ↑ of attendees found evaluation information to include in ATE proposal at least one level.

88% ↑ of attendees found where to include evaluation information to include in ATE proposal at least one level.

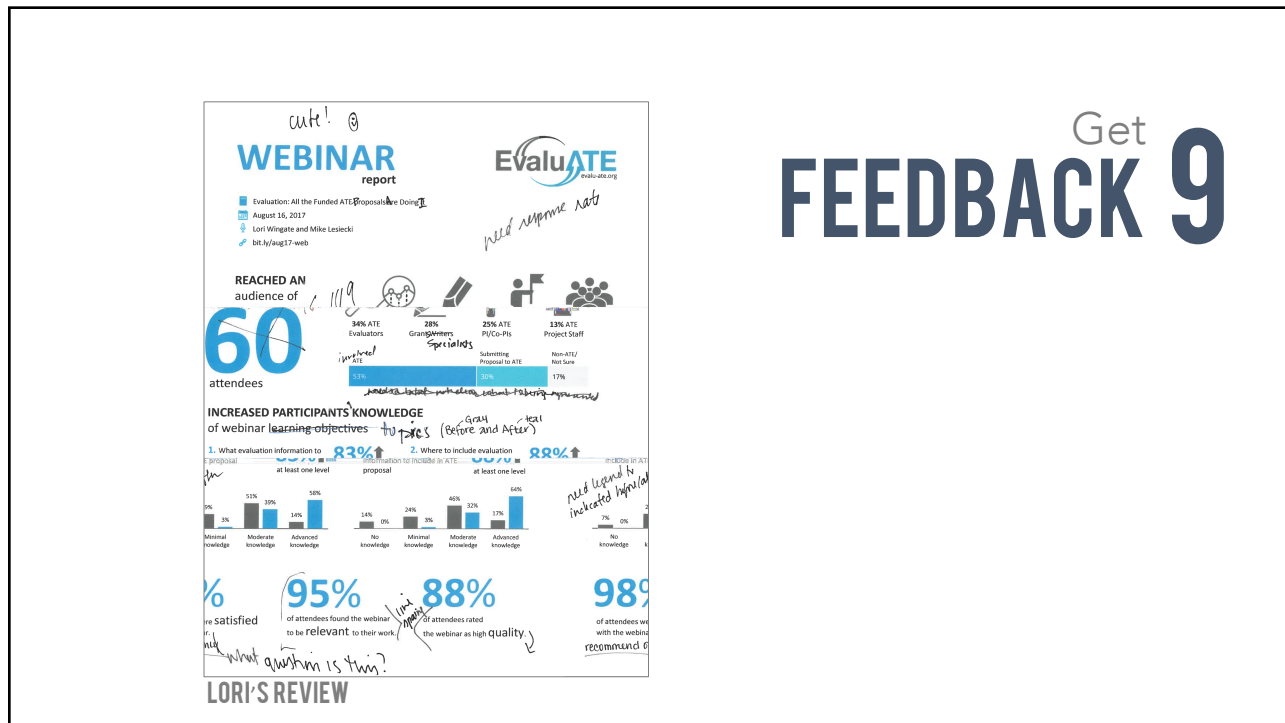
98% of attendees were satisfied with the webinar.

95% of attendees found the webinar to be relevant to their work.

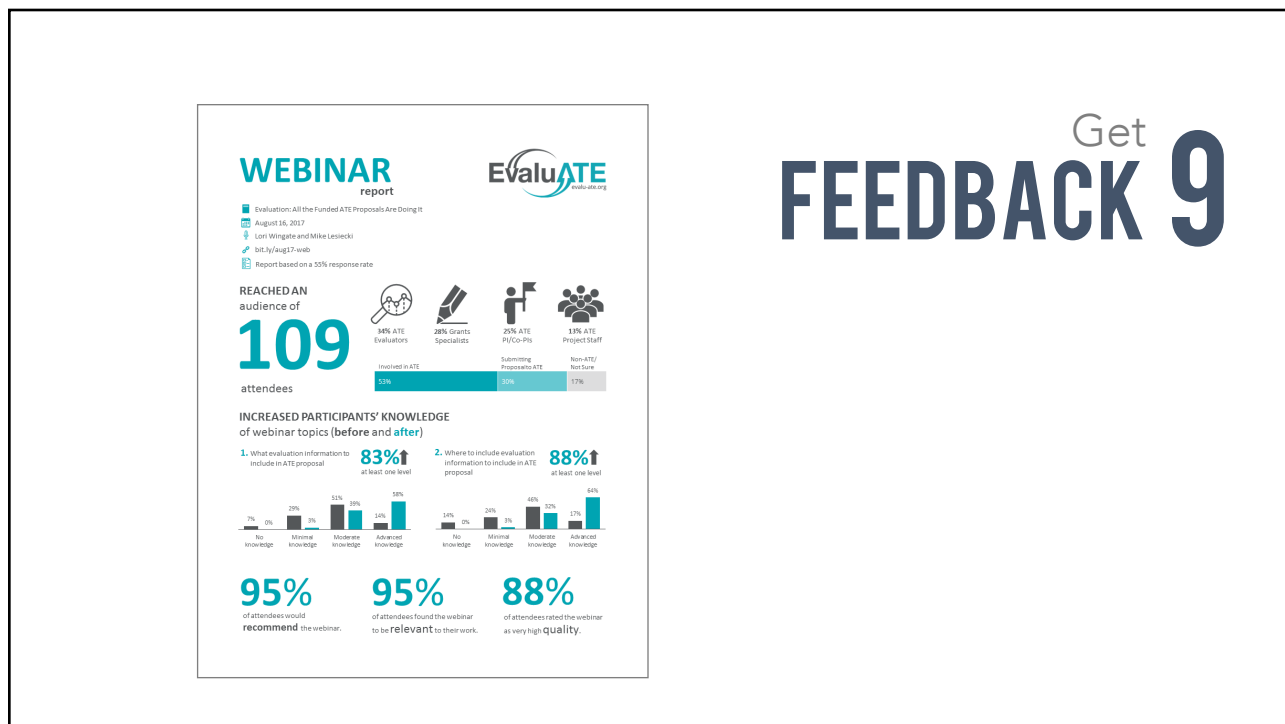
88% of attendees rated the webinar as high quality.

LYSSA'S REVIEW

Get
FEEDBACK 9



Get **FEEDBACK 9**



Get **FEEDBACK 9**

STEPS

to create a one pager

1. Identify the **audience**
2. Identify the **purpose**
3. Prioritize the **information**
4. Choose a **grid**
5. Draft the **layout**
6. Create an intentional **visual path**
7. Create a purposeful **hierarchy**
8. Use **white space**
9. Get **feedback**
10. Triple check **consistency**



WEBINAR report


Evaluation: All the Funded ATE proposals are Doing It
 August 16, 2017
 Lori Wingate and Mike Lesiecki
bit.ly/aug17-web

60 attendees

- 34% ATE Evaluators
- 28% Grant Writers
- 25% ATE PI/Co-PIs
- 13% ATE Project Staff

ATE: 53% | Submitting Proposal to ATE: 91% | Non-ATE/Not Sure: 17%

1. What evaluation information to include in ATE proposal **83%** ↑ at least one level
2. Where to include evaluation information to include in ATE proposal **88%** ↑ at least one level



98% of attendees were **satisfied** with the webinar.
95% of attendees found the webinar to be **relevant** to their work.
88% of attendees rated the webinar as high **quality**.

first draft prior to feedback

WEBINAR report

Evaluation: All the Funded ATE Proposals Are Doing It
 August 16, 2017 | Lori Wingate and Mike Lesiecki

REACHED A DIVERSE AUDIENCE

109 attendees


- 84% ATE Evaluators
- 28% Grants Specialists
- 29% ATE PI/Co-PIs
- 18% ATE Project Staff

60 participants (55%) responded to the webinar survey.

53% Involved in ATE
30% Submitting to ATE
17% Non-ATE/Not Sure

INCREASED RESPONDENTS' KNOWLEDGE of webinar topics (before and after)

1. What evaluation information to include in ATE proposal **83%** ↑ at least one level
2. Where to include evaluation information to include in ATE proposal **88%** ↑ at least one level

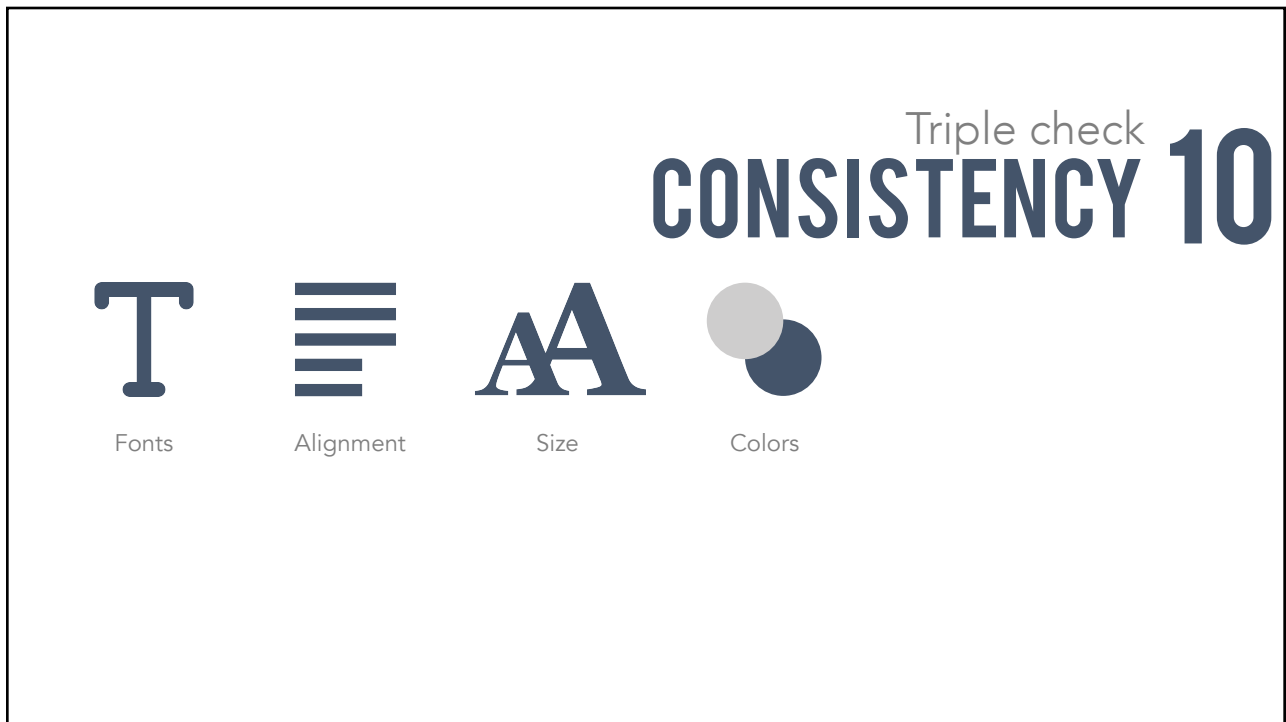


HIGHLY RATED IN ALL AREAS MEASURED

95% of respondents would **recommend** the webinar.
95% of respondents said the webinar was **relevant** to their work.
88% of respondents said the webinar was very high **quality**.

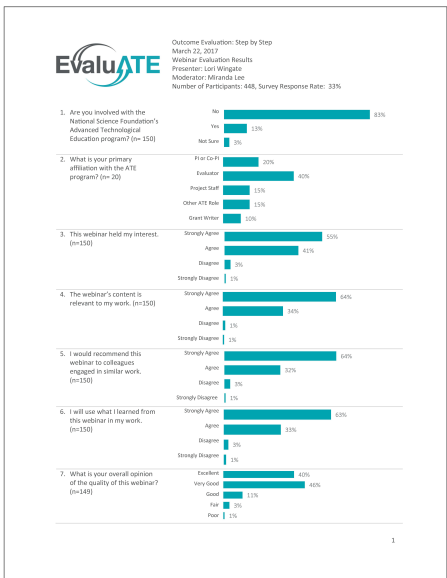
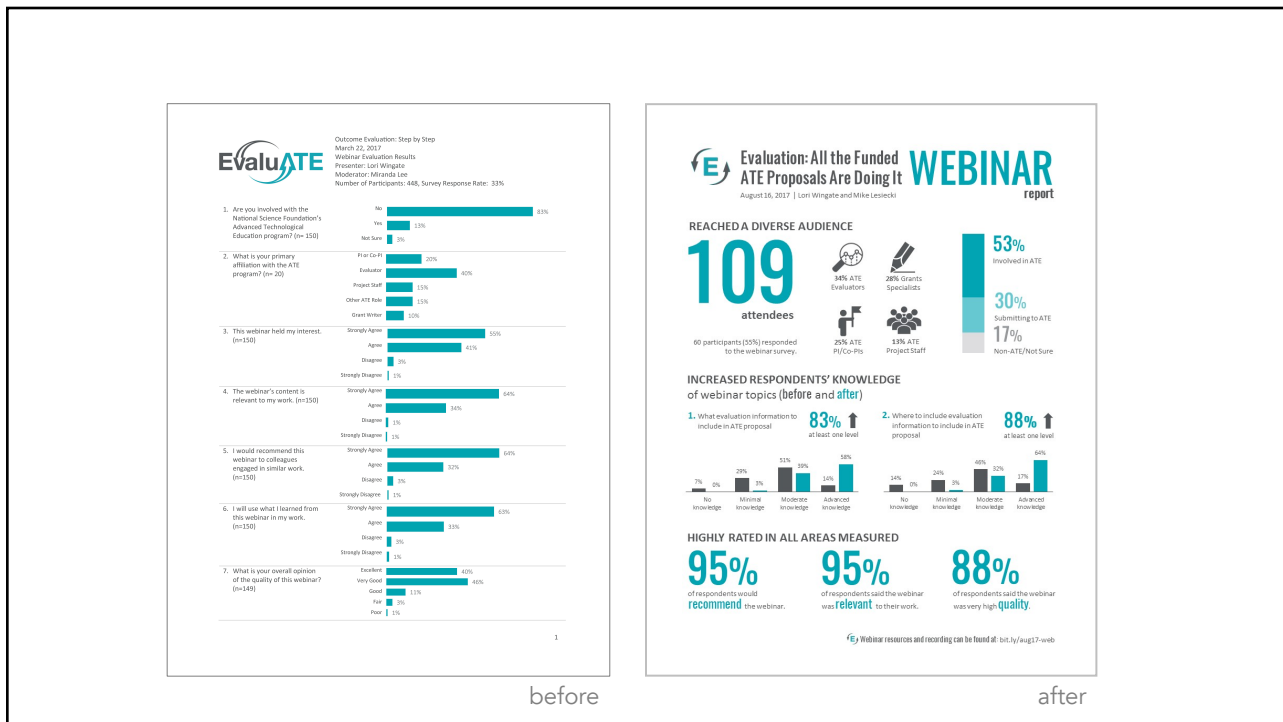
Webinar resources and recording can be found at: bit.ly/aug17-web

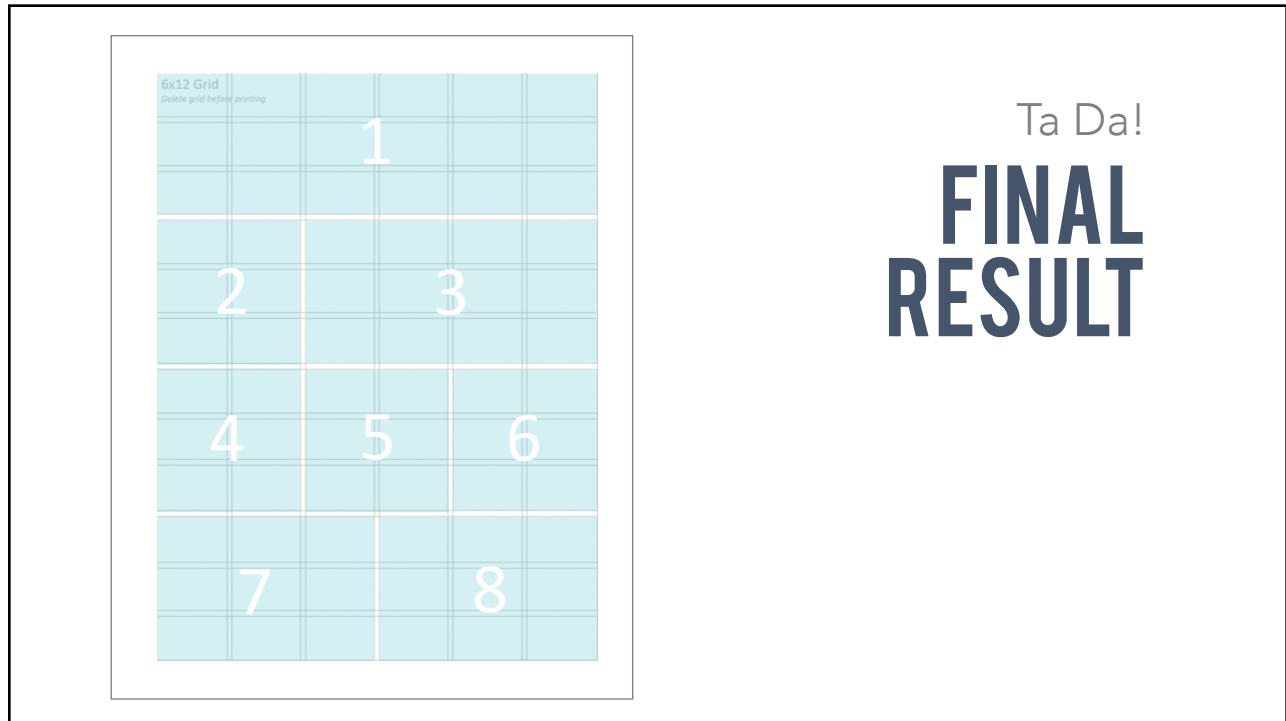
final draft after feedback





Triple check CONSISTENCY 10





AVAILABLE ONLINE

slides, grid templates & handout

bit.ly/EvaluATE-AEA

THANK YOU

Emma Perk
emma.perk@wmich.edu

Lyssa Wilson Becho
lyssa.becho@wmich.edu

