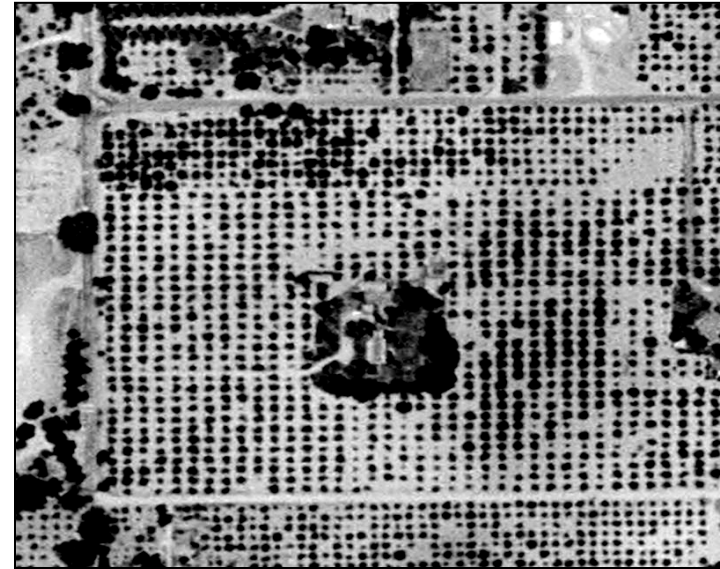


# Identifying Land Use Change in the Santa Clara Valley, California



**Topic:** Agricultural, environmental and disaster management

**Problem Statement:** The project study area is in Santa Clara County, California, in a region that has seen exponential growth during the last 33 years. Rich farmland has been transformed into large tracts of commercial and residential space, and expanded transportation routes carry more traffic. It is important to document this growth, since the study area is prone to earthquakes and liquefaction, and the risks for loss of life and property have increased as land use patterns have changed.



1956

**Level:** Intermediate

**Software:** ArcGIS, Spatial and 3D Analyst, Trimble Pathfinder Office, ENVI

**Description:** Students use remote sensing and GIS to detect and document land use changes in the Santa Clara Valley.

**Key words:** Land use, change detection, Santa Clara Valley, California



1968



1993