



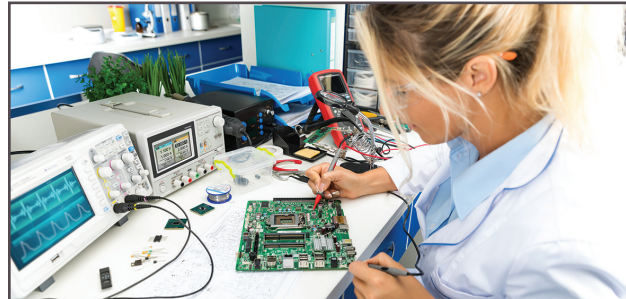
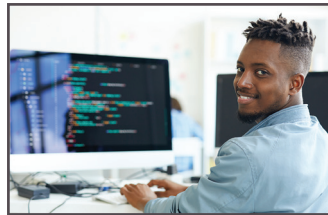
**Science and Technology:  
Your Future, Our Passion**

## About the Electrical Engineering Technology 3+1 Degree at RCBC

The 3+1 Electrical Engineering Technology (EET) program allows students to obtain an associate and bachelor's degree for a fraction of the cost.

EET students are prepared with the skills to design, prototype, develop, test and manufacture electrical and electronic systems.

This hands-on program extends into industries related to radar, industrial controls, navigation, robotics and computers. Students will have the opportunity to interact with designers, developers, manufacturing experts and industry customers.



### 3+1=More 4 You!

- Students who enroll in the 3+1 programs seamlessly obtain two high-quality degrees from both RCBC and Rowan University.
- All classes are conveniently held at the RCBC Mount Laurel Campus.
- Senior year courses are taken with Rowan University faculty.



For more information, visit [rcbc.edu/3plus1](http://rcbc.edu/3plus1)



| Electrical Engineering Technician<br><b>QUICK FACTS:</b> |                   |
|--|-------------------|
| 2017 NJ Mean Pay   | \$67,270 per year |
| Typical Entry-Level Education                            | Associate degree  |
| Prior Work Experience                                    | None              |
| Number of US Jobs  | 137,000           |
| Number of NJ Jobs  | 2,730             |
| NJ Job Outlook   | 6.2% growth       |

Sources: US Dept. of Labor Bureau of Labor Statistics;  
NJ Dept. of Labor; [projectionscentral.com](http://projectionscentral.com)

### Topics Covered

- Technology integration and analysis
- Microprocessor architecture and controls
- Electronic circuits
- Digital and analog systems
- Signal processing
- Programmable logical processes
- Hardware and software languages
- Complex problem-solving methodologies

### Student Research

The STEM Division is committed to integrating research into its programs and introducing students to investigating real workplace problems.

### Have Additional Questions?

Go to [rcbc.edu/admissions](http://rcbc.edu/admissions) or contact the Office of Outreach and Admissions at (856) 222-9311, ext. 1199 or [admissions@rcbc.edu](mailto:admissions@rcbc.edu).

