



**NSF ATE Program Funding Opportunities &
Mentor-Connect Orientation Webinar
1:00 p.m. – 2:30 p.m. ET
Thursday, September 12, 2019**



Welcome and Introduction



Elaine Craft,
Principal Investigator



Ellen Hause,
Co-Principal Investigator



Dennis Faber,
Co-Principal Investigator



Osa Brand,
Senior Personnel/Mentor



Emery DeWitt
Project Manager/
Co-Principal Investigator



Rick Roberts
Managing Director SCATE/
Co-Principal Investigator



David Hata,
External Evaluator



Tynisha Ferguson,
Communications and Technology

Welcome and Introduction



Guest Speaker



Ann Beheler
Executive Director
Emerging Technology Grants
Collin County Community
College

Agenda



Part I: Introduction to the NSF ATE Program

- NSF – the agency
- Opportunities for NSF ATE Grant Funding
- Small Grants for Institutions New to ATE
- Next step, “moving-up” ATE project options

Part II: Mentor-Connect Opportunity

- Overview
- Mentoring Options and Structure
- Technical Assistance and Resources
- Tips for Success

Welcome to NSF



**NSF ATE Program
Division of Undergraduate Education
National Science Foundation**

Welcome to NSF

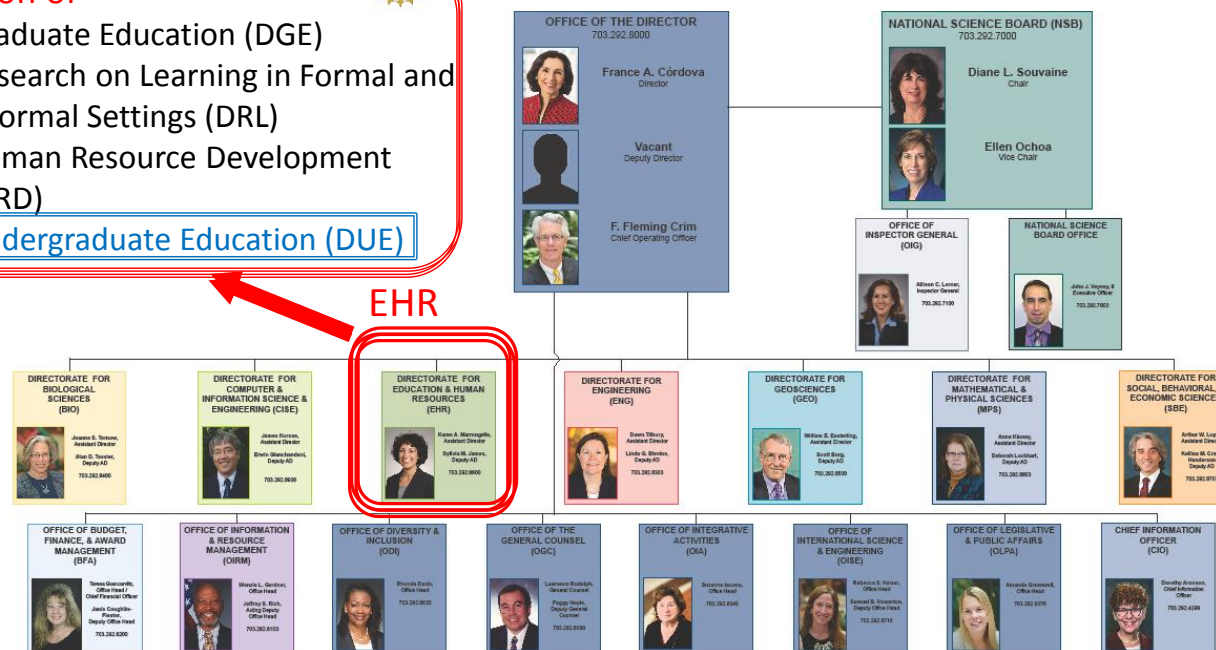


Division of

- Graduate Education (DGE)
- Research on Learning in Formal and Informal Settings (DRL)
- Human Resource Development (HRD)
- **Undergraduate Education (DUE)**



NATIONAL SCIENCE FOUNDATION



National Science Foundation
2415 Eisenhower Avenue
Alexandria, Virginia 22314
TEL: 703.292.5111 | FIRS: 800.877.8339 | TDD: 800.281.8749

May 2019

www.NSF.gov



National Science Foundation
WHERE DISCOVERIES BEGIN

Finding ATE

Operating Status OPEN

Contact | Help

Search ATE or 18-571

NSF

Research Areas

Funding

Awards

Document Library

News

About NSF



Advancing the Sciences

Funding & Supporting

Inspiring & Educating

- HIDE

2018 NSF ATE Solicitation



NSF 18-571: 3-year solicitation for Oct. 2018, Oct. 2019, and Oct. 2020 proposals
2019 submission deadline: October 3

Changes with this or the previous ATE solicitation:

- *Change:* funding duration and size of awards for the Centers track. For Center areas see www.atecenters.org and solicitation.
- *Change:* maximum budget for projects. Budgets range from \$300,000 to \$600,000 total maximum budget.
- *Addition:* project focus areas in Adaptation and Implementation (A&I) and Instrumentation Acquisition
- *Change:* eligibility requirements for Small, New to ATE. Allows institutions that have not received an ATE award in the past 7 years to apply (based on original funding date)

Also,

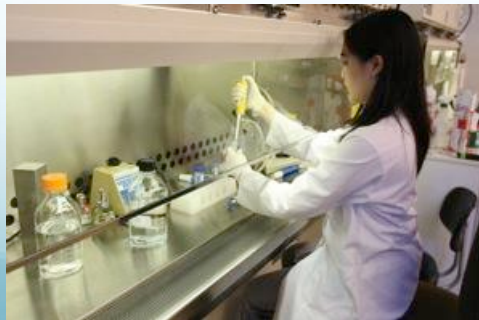
- Developers are encouraged to use an open learning approach for any new learning materials and computer software developed.
- Proposals submitted need to be in compliance with both the ATE solicitation and the NSF Proposal & Award Policies & Procedures Guide (PAPPG) (NSF 19-1)

Advanced Technological Education (ATE)

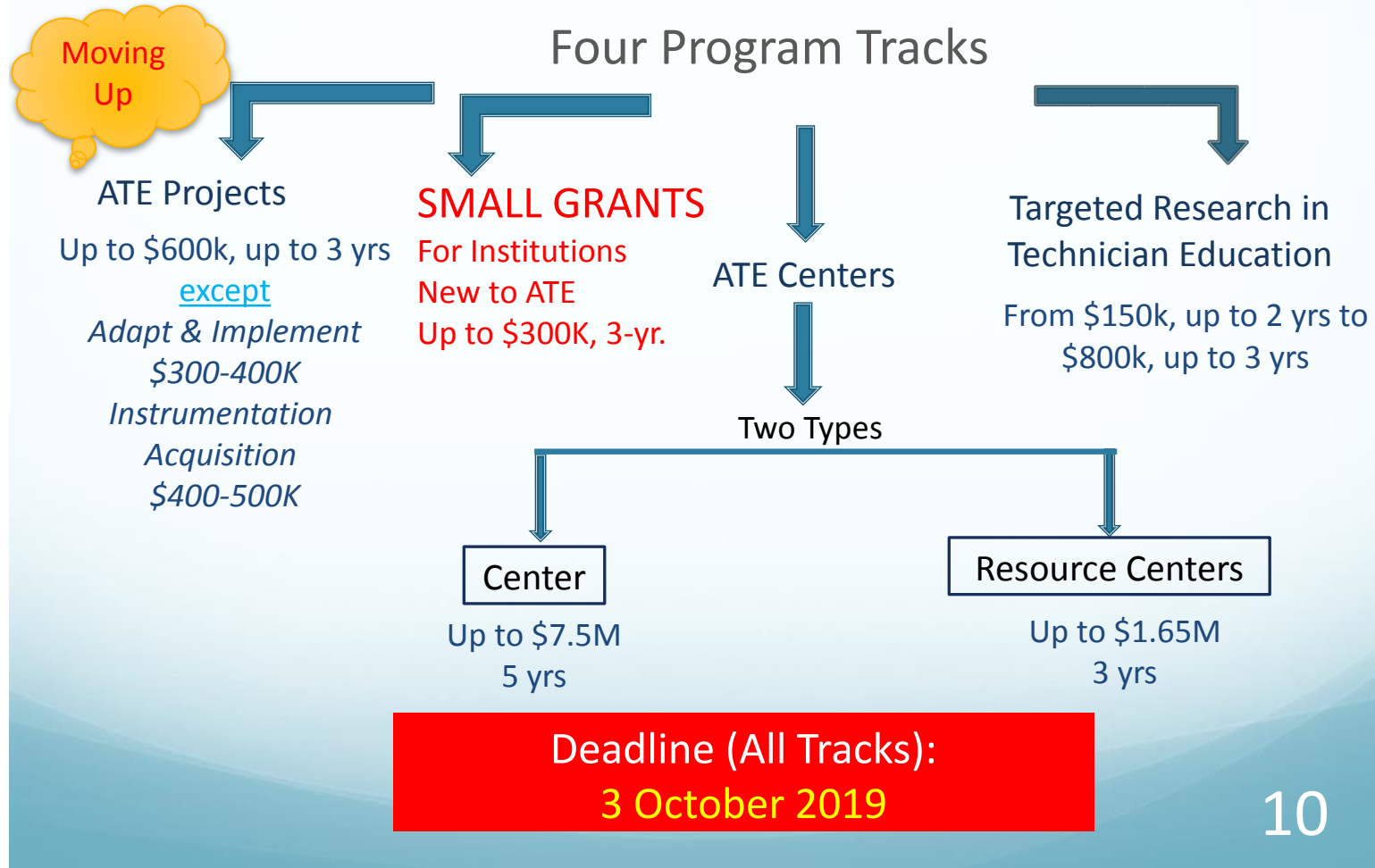


The education of highly qualified science and engineering technicians for advanced-technology fields that drive the nation's economy.

- **Community colleges** have leadership roles on all projects.
- Grades 7-12, 2yr- and 4-yr institutions can be supported. (Pathways)
- **Partnerships** with Industry and Economic Development Entities – **Hiring Needs**



ATE Program continued



ATE Projects



Projects - up to \$200,000 /yr. (\$600,000 max.), 3yrs.

- Program Development, Implementation and Improvement;
- Professional Development for Educators;
- Curriculum and Educational Materials Development;
- Teacher Preparation;
- Small Grants for Institutions New to the ATE Program (\$300K, 3-yrs.);
- Adaptation and Implementation (A&I); \$300-400K, 2-3 yrs.);
- Instrumentation with Curriculum Updates; \$400-500K, 2-3 yrs.)
- ATE-Coordination Networks (up to \$600,000, 3 yr.)



ATE FUNDING RATE VARIABLES



Rate is influenced by
\$ available

proposals received

Type of proposal (funding track)

Quality of proposals

Advice from Program Officers



- Read the solicitation!**
- Choose right program track**
- Start early**
- Faculty-driven concept & work plan**
- Get help – avoid errors**
 - Program Officers
 - Mentor-Connect
 - Project/Center PIs
- Be alert to guidelines** (PAPPG, NSF 19-1)



Poll



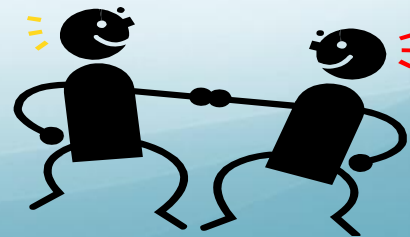
What is your current role at your institution?

- A. Faculty**
- B. Administrator**
- C. Grant writer**
- D. None of the above**

Why Mentor-Connect?



- Too few community colleges benefit from NSF funding via 2-year-college-focused ATE Program
- New-to-ATE often struggle to “move up”
- Too many drop-out if proposal is declined
- Complexity of “grantsmanship”
- Need for highly skilled technicians



Mentor-Connect Assistance



Mentoring & Technical Assistance

Workshops

Success Data

Application/Selection

Resources and Just-in-time help

Leadership Development



2018-19 Mentors



Your Mentor's Role



- Assist team during workshops
- ~36 hrs. customized mentoring/consulting
- Proposal guidance

Strengthen proposal topics

Refine ideas & strategies

Provide links to ATE resources/people

Help in addressing NSF & ATE requirements



Cohort Structure



College teams comprised of at least 2 STEM faculty and 1-2 additional STEM faculty, administrators or grant writers. Teams selected each year in October



**Teams
make the
difference!**

Cohort Benefits



- A three-day winter grant-writing workshop
- An ATE-experienced mentor assigned to each team
- Technical assistance webinars (3 or more)
- One-day summer workshop & HI-TEC Conference
- Other resources and “help desk” support

Financial Support



Travel support

- Winter Workshop up to \$1200 each for the future PI and a Co-PI
- Summer Workshop up to \$1200 each for the PI and either a Co-PI or a grant writer (Summer Workshop includes \$500 HI-TEC registration fee)



Teamwork Encouraged



Winter Workshop up to two:

- Grant Writers
- Sponsored Research Officers (SROs)
- Other supportive administrators



Costs: travel, hotel, \$475 registration

Teamwork Encouraged



Winter Workshop benefits grant writers, SROs and other administrators

- Separate workshop tracks
- Mentor Support
- Mentor-Connect resources



Potential Additional Financial Support



Four-person college teams participating in Mentor-Connect get the best results

Additional travel support for grant writers or administrators may be available



Who is Eligible?



- ✓ 2-year technical and community colleges
 - ...No ATE grant funding in the past 7 years
 - ✓ STEM faculty
 - ...Who prepare technicians for the U.S. workforce
 - ✓ Limit: one team application per eligible college
- Note:** Don't submit proposal to ATE and application to Mentor-Connect in same October

Who is Encouraged?



Especially encouraged to participate:

Rural colleges

Diverse STEM Faculty (underrepresented)

Female

Hispanic/Latino

African-American

Alaskan Native/Native American

Mentor-Connect Assistance



Mentoring & Technical Assistance

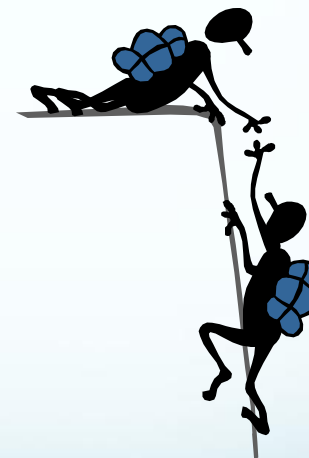
Workshops

Success Data

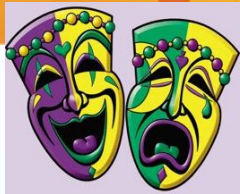
Application/Selection

Resources and Just-in-time help

Leadership Development



Winter Workshop



January 29-31, 2020, New Orleans, Louisiana
Team work with assigned mentor

- Grant-writing skills & tips for being competitive in NSF ATE program
- Mock panel review of actual grant proposals
- Leadership skills development
- Special sessions for grant writers & administrators

Summer Workshop



July 29-31, 2020, at High Impact Technology Exchange Conference (HI-TEC), Portland, Oregon

- **Team work time with mentor**
- **Grant-writing technical assistance**
- **Advice from and networking with mentees who have been successful**



Mentor-Connect Through the Years



Previous workshops.....

Mentor-Connect Workshops



NEW ORLEANS
WINTER WORKSHOP 2019





Mentor-Connect Assistance



Mentoring & Technical Assistance

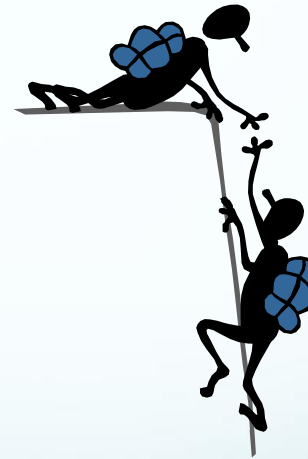
Workshops

Success Data

Application/Selection

Resources and Just-in-time help

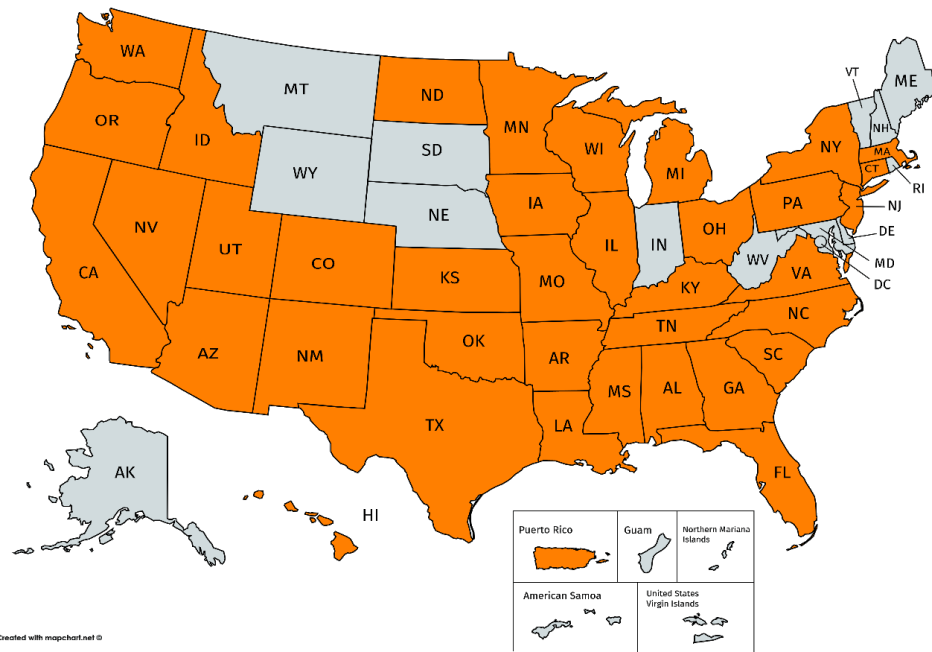
Leadership Development



Data - Success by the Numbers



7 Cohorts → 38 states → 1 US Territory



143 Colleges Teams → 300 Faculty → 170 Grant Writers/Administrators

Data – Success by the Numbers



- **NSF ATE proposal submissions:** 86% of Mentor-Connect Colleges submitted proposals
- **Cohort 6 outcomes:** 17 submissions/15 awards (88% funding success)
- **NSF awards to Mentor-Connect Mentees:**
71/97 = 73% success for small grants
(71/104 = 68% success rate overall)
- **Mentor-Connect applicants accepted into a cohort*:** 65%
- **100% of colleges who re-applied for Mentor-Connect when not initially selected have been selected to date (not guaranteed)**

* Cohort 7 (22 teams accepted)

Mentor-Connect Assistance



Mentoring & Technical Assistance

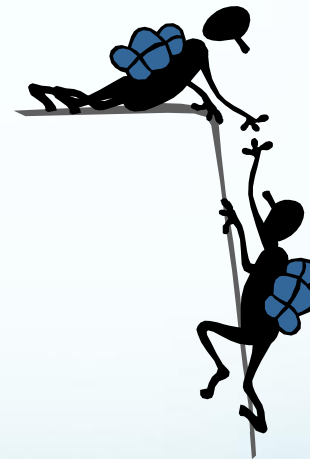
Workshops

Success Data

Application/Selection

Resources and Just-in-time help

Leadership Development



What is Required?



- ✓ An idea for enhancing technician education
- ✓ 2 STEM faculty who
 - *Participate fully
 - *Develop the project plan
 - *Lead as PI and Co-PI
 - *Have experience/qualifications
- ✓ Industry need for completers of the targeted technician education program(s)
- ✓ Support of college/administrators for the faculty team
- ✓ College commitment to submit ATE grant proposal

How to Apply



Access application package:

www.Mentor-Connect.org

“Get a Mentor”

Deadline October 11, 2019

Application Components:

Electronic Application &

College Affidavit

Selection Process



Each applicant is offered Mentor-Connect help

All teams will be *notified on Friday, November 8, 2019*

- 20 colleges will be selected for Mentor-Connect Cohort 8
- Those not selected receive:
 - Opportunity for one-on-one consultation
 - Invitations to technical assistance webinars
 - Access to online resources

Selection Criteria



- ☐ Application is complete
- ☐ College is “small grant” eligible
- ☐ Good idea with clear technician education focus

Selection Criteria



- ☐ STEM faculty team, highly interested*
- ☐ Geographic diversity of institution
- ☐ Demographic diversity of faculty team members/
Students

* Note: faculty are not required to have a doctorate degree.

Initial Expectations...



- Read acceptance or decline letter thoroughly
- Register and prepare for winter workshop
... if declined, sign up for consultation
- Early contact with assigned mentor
- Ask questions

Mentor-Connect



Mentoring & Technical Assistance

Workshops

Success Data

Application/Selection

Resources and Just-in-time help

Leadership Development



Resources & Just-in-Time Help



- **200+ self-help resource library available online including templates, samples, checklists, guidelines, tutorials and more related to grant proposals**
- **Live/Recorded Webinars**
- **Frequently Asked Questions**
- **Glossary of terms**
- **Help Desk**

Mentor-Connect



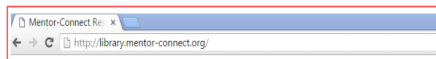
Website



EZ Guide for Using the Mentor-Connect Collection

1. Go to <http://library.mentor-connect.org/>.

Note: Use Google Chrome internet browser to access resource collection.



Workshops



Webinars/ Tutorials



Mentor-Connect Assistance



Mentoring & Technical Assistance

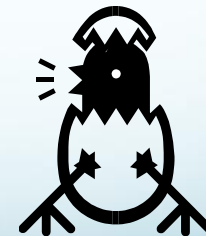
Workshops

Success Data

Application/Selection

Resources and Just-in-time help

Leadership Development



Leadership Development



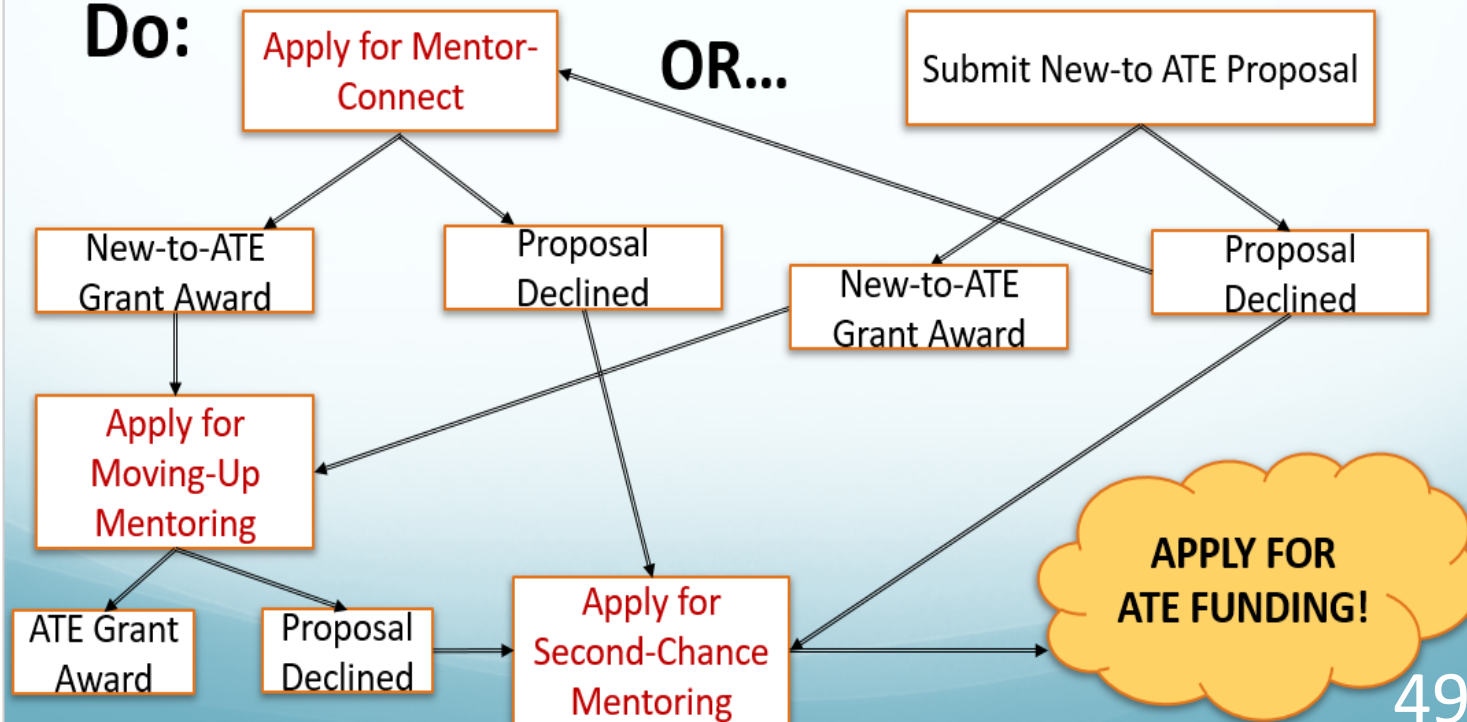
- Results from problem-based learning as faculty develop projects, prepare proposals, and implement projects
- Occurs throughout Mentor-Connect participation and continues
- Experiences expand faculty beyond the classroom and normal faculty roles at a college
- Opportunity to become a Mentor

Tips for SUCCESS-Mentor-Connect



Don't: Submit New-to-ATE proposal & apply to Mentor-Connect in same year

Do:



New Mentoring Opportunities



Moving Up & Second-Chance Mentoring

Moving Up in ATE Funding

- 4-6 college teams selected each year (spring)
- Successful completion of Small, New-to-ATE project
- Mentor to help guide and review proposal development

Second Chance for ATE Funding

- 2-4 college teams selected each year (spring)
- First or second ATE project proposal declined
- Same grant concept & some of the same PIs/Co-PIs
- Mentor to help guide rework of declined proposal

Also:
Technical
Assistance &
Other Mentor-
Connect
Resources!

Giving Back to ATE



Mentor Fellows Initiative

Developing new mentors who assist prospective grantees prepare competitive ATE Grant proposals

Mentor Fellows grow professionally while helping others!

Have you implemented two or more successful ATE grants?

Would you like to give back to the ATE community?



Funded by the National Science Foundation
Advanced Technological Education (ATE) Program
DUE# 1501183 & DUE#1840856



Questions



Connect with Mentor-Connect

www.Mentor-Connect.org



Mentor-Connect@fdtc.edu



ATEMentorConnect



@Mentor_Connect

Mentor-Connect@fdtc.edu



Leadership Development and Outreach for ATE

NSF DUE # 1501183 and #1840856

Elaine Craft, Principal Investigator

SC ATE Center of Excellence

Florence-Darlington Technical College - Florence, SC 29501-0548

