



NSF ATE Program Funding Opportunities & Mentor-Connect Orientation Webinar

[Click here to watch the video recording](#)

Thursday, September 8, 2016



Welcome and Introduction



**Elaine Craft,
Principal Investigator**



**Ellen Hause,
Co-Principal Investigator**



**Dennis Faber,
Co-Principal Investigator**



**Charlotte Forrest,
Project Manager
Co-Principal Investigator**



**Osa Brand,
Senior Personnel/Mentor**



**David Hata,
External Evaluator**



**Tynisha Ferguson,
Communications and Technology**

Welcome and Introduction

Special Guest:

**Dr. Celeste Carter, NSF Program Director
Co-Lead, ATE Program Officer**



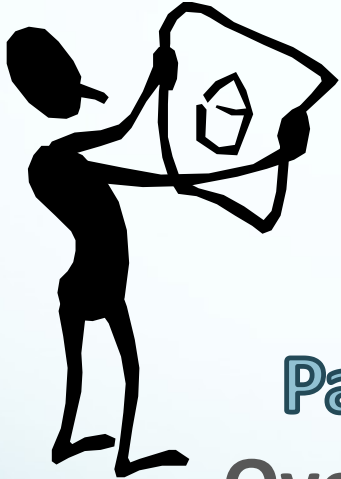
Agenda

Part I: Introduction to the NSF ATE Program

NSF – the agency

Opportunities for NSF ATE Grant Funding

Small Grants for Those New to ATE



Part II: Mentor-Connect Opportunity

Overview

Mentoring Structure

Technical Assistance and resources

Timelines

Poll

How many participants, including yourself, are sharing your screen?

(please answer via the chat box)

Welcome to NSF



Arlington, VA



2016 Alexandria, VA

Celeste Carter

Division of Undergraduate Education
National Science Foundation

vccarter@nsf.gov

Welcome to NSF



NATIONAL SCIENCE FOUNDATION

NATIONAL SCIENCE BOARD (NSB)
 Dan E. Arvizu, Chair
 Kelvin K. Droegemeier, Vice Chair
 703.292.7000

NATIONAL SCIENCE BOARD OFFICE
 Michael Van Woert, Executive Officer
 703.292.7000

OFFICE OF INSPECTOR GENERAL (OIG)
 Allison C. Lamer, Inspector General
 703.292.7100

Richard Buckius, Chief Operating Officer

OFFICE OF THE DIRECTOR
 703.292.8000
France A. Córdova, Director
Vacant, Deputy Director

OFFICE OF DIVERSITY & INCLUSION (ODI)
 Rhonda Davis, Head
 703.292.8000

OFFICE OF THE GENERAL COUNSEL (OGC)
 Lawrence Rudolph, General Counsel
 Peggy Wehr, Deputy GC
 703.292.8000

OFFICE OF INTEGRATIVE ACTIVITIES (OIA)
 Suzanne Jackson, Head
 703.292.8040

OFFICE OF INTERNATIONAL SCIENCE & ENGINEERING (OISE)
 Rebecca Palmer, Head
 703.292.8710

OFFICE OF LEGISLATIVE & PUBLIC AFFAIRS (OLPA)
 Amanda Greenwell, Head
 703.292.8070

DIRECTORATE FOR BIOLOGICAL SCIENCES (BIO)
 James L. Oak, Assistant Director
 James Schweitzer, Deputy AD
 703.292.8440

DIRECTORATE FOR COMPUTER & INFORMATION SCIENCE & ENGINEERING (CISE)
 James T. Krumm, Assistant Director
 Craig Greenblatt, Acting Deputy AD
 703.292.8600

DIRECTORATE FOR EDUCATION & HUMAN RESOURCES (EHR)
 Jesse Ferris-Bonds, Assistant Director
 Wilson Long Levin, Deputy AD
 703.292.8600

DIRECTORATE FOR EDUCATION & ENGINEERING (ENG)
 Frederick R. Hargreaves, Assistant Director
 Grace Wang, Deputy AD
 703.292.8300

DIRECTORATE FOR GEOSCIENCES (GEO)
 Roger Williams, Assistant Director
 Margaret Conaway, Deputy AD
 703.292.8300

DIRECTORATE FOR MATHEMATICAL & PHYSICAL SCIENCES (MPS)
 Flewelling Cline, Assistant Director
 Clifford Gabriel, Acting Deputy AD
 703.292.8600

DIRECTORATE FOR SOCIAL, BEHAVIORAL, & ECONOMIC SCIENCES (SBE)
 Fay L. Cook, Assistant Director
 Katrina M. Craig-Henderson, Deputy AD
 703.292.8700

OFFICE OF BUDGET, FINANCE, & AWARD MANAGEMENT (BFA)
 Martha A. Rubenstein, Head / Chief Financial Officer
 Teresa Grossman, Deputy Head
 703.292.8200

OFFICE OF INFORMATION & RESOURCE MANAGEMENT (IRM)
 Andrew S. Torres, Head / Chief Human Capital Officer
 Dawn Burt, Deputy Head
 703.292.8100

DIVISION OF BIOLOGICAL INFRASTRUCTURE (DBI)
 Mark D. Pessen, Division Director
 703.292.8400

DIVISION OF COMPUTER & NETWORK SYSTEMS (CNS)
 Peter Aronberg, Acting Division Director
 703.292.8600

DIVISION OF GRADUATE EDUCATION (DGE)
 Dawn Evers, Division Director
 703.292.8300

DIVISION OF CHEMICAL, BIOENGINEERING, ENVIRONMENTAL, & TRANSPORT SYSTEMS (CBETS)
 John Lighty, Division Director
 703.292.8300

DIVISION OF ATMOSPHERIC & GEOSPACIAL SCIENCES (AAGS)
 Paul Simpson, Division Director
 703.292.8300

DIVISION OF ASTRONOMICAL SCIENCES (AST)
 James Underhill, Division Director
 703.292.8600

DIVISION OF EARTH SCIENCES (EAR)
 Carol Frost, Division Director
 703.292.8500

BUDGET DIVISION (BDC)
 Michael Savaris, Division Director
 703.292.8200

DIVISION OF ADMINISTRATIVE SERVICES (DAS)
 Monica Gardner, Acting Division Director
 703.292.8100

DIVISION OF ENVIRONMENTAL BIOLOGY (DEB)
 Faith M. Sherris, Division Director
 703.292.8400

DIVISION OF COMPUTING & COMMUNICATION FOUNDATIONS (CCF)
 Paul Rosenberg, Division Director
 703.292.8600

DIVISION OF HUMAN RESOURCE DEVELOPMENT (HRD)
 Sylvia James, Division Director
 703.292.8600

DIVISION OF CIVIL, MECHANICAL, & MANUFACTURING INNOVATION (CMMI)
 Deborah Devoliga, Division Director
 703.292.8300

DIVISION OF EARTH SYSTEMS (EAS)
 Richard Murray, Division Director
 703.292.8500

DIVISION OF CHEMISTRY (CHE)
 Carol Beaulac, Division Director
 703.292.8600

DIVISION OF SOCIAL & ECONOMIC SCIENCES (SES)
 Alan Trevisan, Acting Division Director
 703.292.8700

DIVISION OF ACQUISITION AND COOPERATIVE SUPPORT (DACS)
 Jeffrey Lepley, Division Director
 703.292.8200

DIVISION OF INFORMATION SYSTEMS (DIS)
 Kimberly Anderson, Division Director
 703.292.8100

DIVISION OF INTEGRATIVE ORGANISMAL SYSTEMS (IOS)
 Heidi D. de Gooijer, Division Director
 703.292.8400

DIVISION OF ADVANCED CYBERINFRASTRUCTURE (ACI)
 Steve Quackenbush, Division Director
 703.292.8600

DIVISION OF RESEARCH ON LEARNING IN FEDERAL & INFORMAL SETTINGS (RFLIS)
 Anne Hall, Division Director
 703.292.8600

DIVISION OF ELECTRICAL, COMMUNICATIONS & CYBER SYSTEMS (ECCS)
 Barry D'Amico, Division Director
 703.292.8300

DIVISION OF OCEAN SCIENCES (DOS)
 Richard Murray, Division Director
 703.292.8500

DIVISION OF MATERIALS RESEARCH (DMR)
 Linda S. Sperlich, Acting Division Director
 703.292.8600

NATIONAL CENTER FOR SCIENCE AND ENGINEERING STATISTICS (NCSES)
 Jack Green, Division Director
 703.292.8700

DESIGN OF FINANCIAL MANAGEMENT (DFM)
 Michael Brennan, Division Director
 703.292.8200

DIVISION OF HUMAN RESOURCE MANAGEMENT (HRM)
 Judy Savelle, Division Director
 703.292.8100

DIVISION OF MOLECULAR & CELLULAR BIOSCIENCES (DMCB)
 Linda E. Taylor, Division Director
 703.292.8400

DIVISION OF INFORMATION & INTELLIGENT SYSTEMS (IIS)
 Loren E. Parker, Division Director
 703.292.8600

DIVISION OF UNDERGRADUATE EDUCATION (DUE)
 Susan Singer, Division Director
 703.292.8600

DIVISION OF ENGINEERING EDUCATION & CENTERS (EEEC)
 Sherry Rains, Division Director
 703.292.8300

DIVISION OF POLAR PROGRAMS (PPP)
 Kelly Palmer, Division Director
 703.292.8300

DIVISION OF MATHEMATICAL SCIENCES (DMS)
 Richard Tapscott, Division Director
 703.292.8600

OFFICE OF INSTITUTION & AWARD SUPPORT (OIAS)
 Dale Bell, Division Director
 703.292.8200

DIVISION OF GRANTS & AGREEMENTS (DGA)
 Anne B. Tibbitts, Division Director
 703.292.8200

DIVISION OF LARGE FACILITIES OFFICE
 Matthew A. Beaudin, Deputy Director
 703.292.8100

OFFICE OF EMERGING FRONTIERS (EF)
 Charles Liebman, Program Director
 703.292.8200

DIVISION OF INFORMATION & INTELLIGENT SYSTEMS (IIS)
 Loren E. Parker, Division Director
 703.292.8600

DIVISION OF INDUSTRIAL INNOVATION & PROFESSIONS (IIP)
 Barry Johnson, Division Director
 703.292.8300

OFFICE OF EMERGING FRONTIERS IN RESEARCH & INNOVATION (EFRI)
 Sara Franklin, Senior Advisor
 703.292.8200

OFFICE OF MULTIDISCIPLINARY ACTIVITIES (OMA)
 Clark Cooper, Office Head
 703.292.8300

OFFICE OF BUDGET, FINANCE, & AWARD MANAGEMENT (BFA)
 Martha A. Rubenstein, Head / Chief Financial Officer
 Teresa Grossman, Deputy Head
 703.292.8200

OFFICE OF INFORMATION & RESOURCE MANAGEMENT (IRM)
 Andrew S. Torres, Head / Chief Human Capital Officer
 Dawn Burt, Deputy Head
 703.292.8100

National Science Foundation
 4201 Wilson Boulevard
 Arlington, Virginia 22230
 TEL: 703.292.5111 | FIRS: 800.877.8339 | TDD: 800.281.8749

www.NSF.gov

Search
for ATE



National Science Foundation
WHERE DISCOVERIES BEGIN

Contact | Help

Search



HOME

Research Areas

Funding

Awards

Document Library

News

About NSF

ALERT

New Improvements to NSF.gov! FastLane is now under "Funding" located in the main navigation, and "Discoveries" has moved under "News". For questions/comments, email webmaster@nsf.gov.



Advancing the Sciences

Funding & Supporting

Inspiring & Educating

- HIDE

EHR Home Page

Education & Human Resources (EHR)

Education & Human Resources (EHR) Home

About

Programs

Staff

Funding

Awards

News

Events

Additional Resources

Graduate Education (DGE) >

Research Learning in Formal and Informal Settings (DRL) >

Undergraduate Education (DUE) >

Home > Research Areas

Email Print Share



Education and Human Resources (EHR)

EHR supports excellence in U.S. STEM education at all levels, in all settings for the development of a diverse and well-prepared workforce of scientists, technicians, engineers, mathematicians and educators and a well-informed citizenry.

[Read More](#)

Announcements

Special Announcements [Read More >](#)

I-Corps For Learning (I-Corps L) [Read More >](#)

EHR Core Research [Read More >](#)

[See All >](#)

News



Slowly pulling proteins apart reveals unexpected path to stability

AUGUST 8, 2016



Kindergarteners' mathematics success hinges on preschool skills

AUGUST 4, 2016

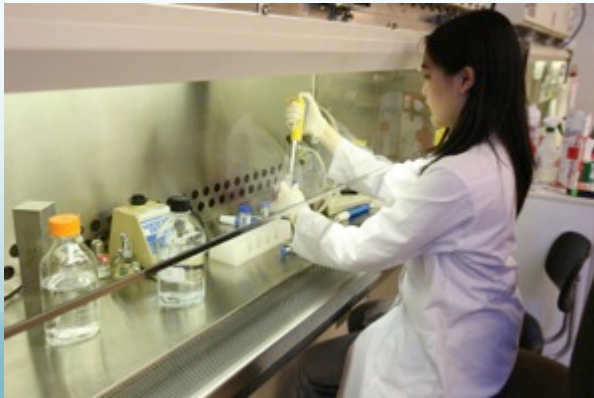


How to engineer a stronger immune system

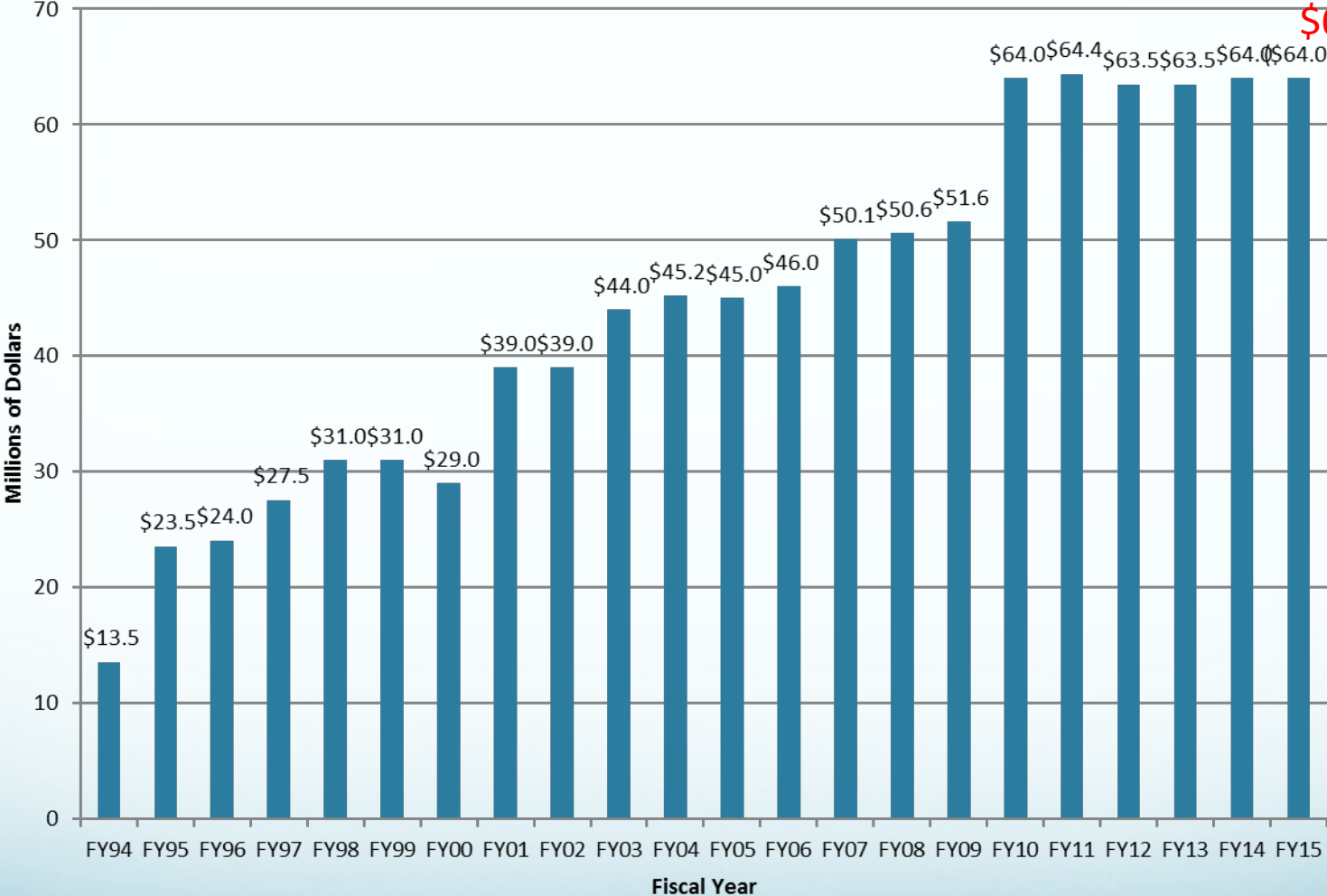
AUGUST 4, 2016

Advanced Technological Education Program (ATE)

- The education of highly qualified science and engineering technicians for advanced-technology fields that drive the nation's economy.
- **Community colleges** have leadership roles on all projects.
- Grades 7-12, 2yr- and 4-yr institutions can be supported. **(Pathways)**
- **Partnerships** with Industry and Economic Development Entities

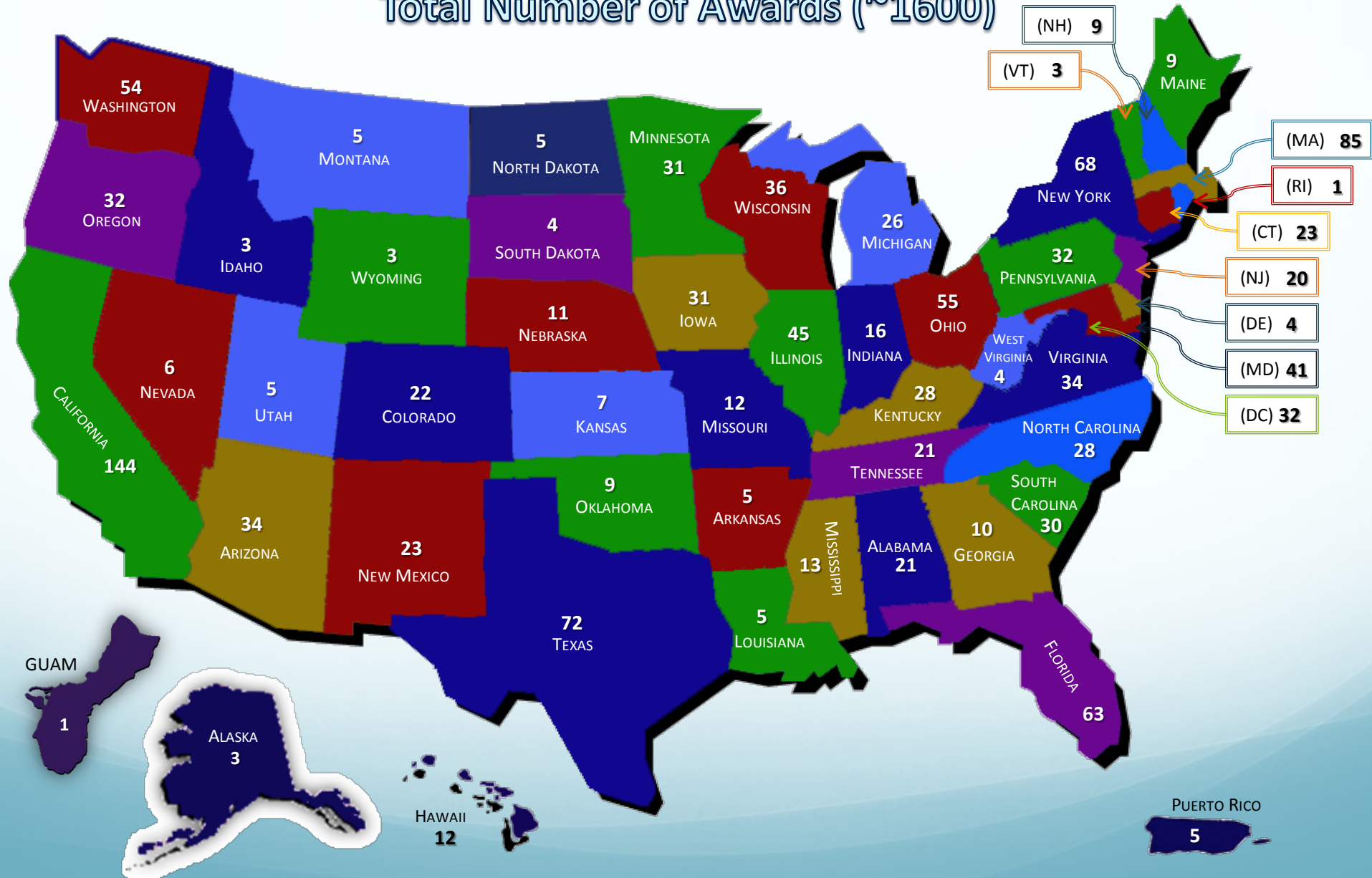


ATE Program Budget



Number of Awards per State in ATE's 22 Year History

Total Number of Awards (~1600)



ATE Program Tracks

- **Projects** (up to \$300,000 /yr, 3yrs.)
 - Program Development, Implementation and Improvement;
 - Professional Development for Educators;
 - Curriculum and Educational Materials Development;
 - Teacher Preparation;
 - **Small Grants for Institutions New to the ATE Program (\$200K,3yrs);**
 - Coordination Networks (ATE-CN) (up to \$200,000/yr., 4 yr.)
- **Centers National, Regional, Support** (\$1.6M-4M, 3-5 yrs.)
- **Targeted Research on Technician Education** (Planning, Exploratory, Full-Scale; \$150,000-\$800,000, 2-3 yrs.)



Poll

What do you think the overall funding rate is for proposals submitted to the NSF ATE Program?

- A. 75-80%**
- B. 40-60%**
- C. 22-34%**
- D. Below 15%**

ATE Program Funding Rate Varies

(\$ available, # proposals, type, quality)



Advice from Program Officers

Read the solicitation

Choose right program track

Start early

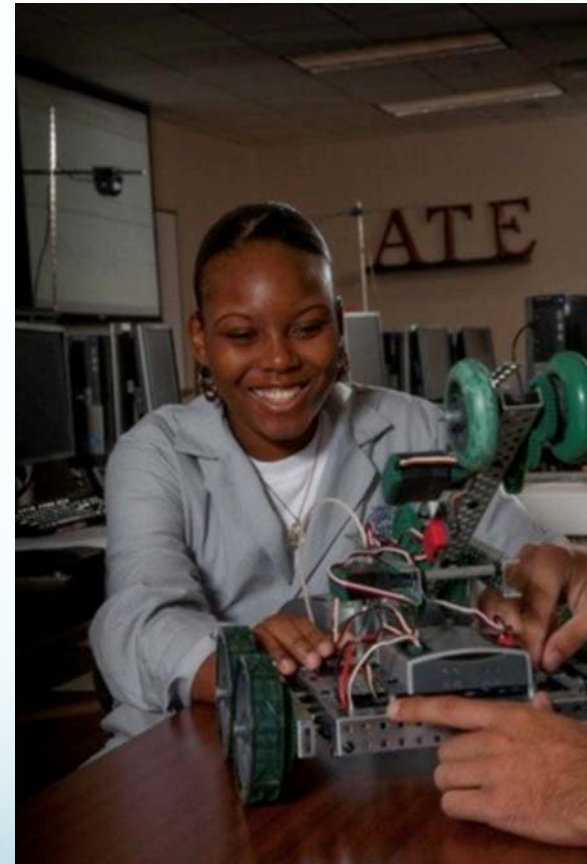
Get help – avoid errors

Program Officers

Mentor-Connect

Project/Center PIs

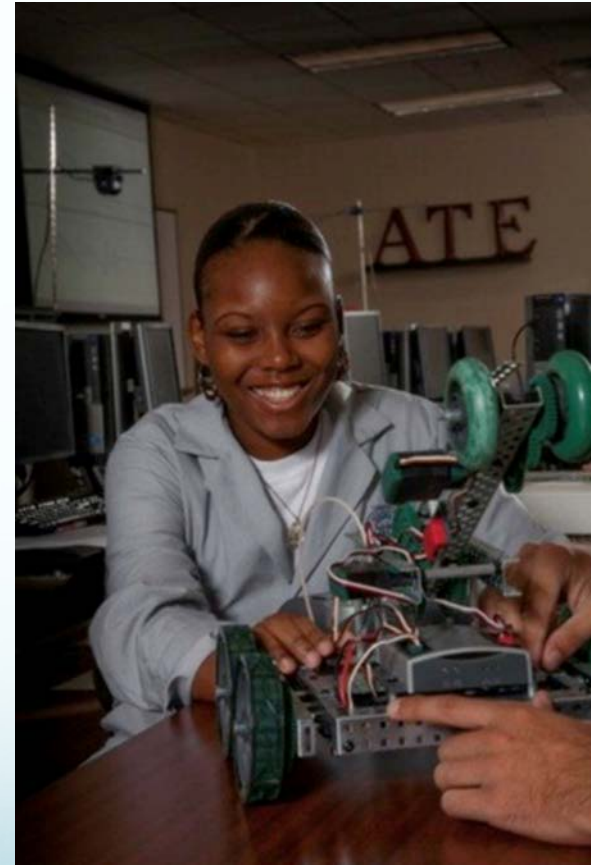
Be alert for changes: new solicitation , 2017



Advice from Program Officers

Questions to respond to:

1. What is your problem?
2. How will you respond to the problem?
3. Does your team have the right credentials to do the work?
4. How will you know if you are successful? (evaluation)
5. How will you tell others about your outcomes? (dissemination)



NSF ATE Solicitation # 14-577

The screenshot shows the NSF website interface. At the top left is the NSF logo with the tagline "National Science Foundation WHERE DISCOVERIES BEGIN". To the right is a "QUICK LINKS" dropdown menu and a search bar. Below this is a navigation bar with links for HOME, FUNDING, AWARDS, DISCOVERIES, NEWS, PUBLICATIONS, STATISTICS, ABOUT NSF, and FASTLANE. On the left side, there is a "Funding" sidebar with a list of links: Find Funding, A-Z Index of Funding Opportunities, Recent Funding Opportunities, Upcoming Due Dates, Advanced Funding Search, Interdisciplinary Research, How to Prepare Your Proposal, and About Funding. A red arrow points to the "About Funding" link. The main content area is titled "Division of Undergraduate Education" and "Advanced Technological Education (ATE)". It includes a "CONTACTS" table with columns for Name, Email, Phone, and Room. Below the table are sections for "PROGRAM GUIDELINES" (with a link to Solicitation 14-577), "DUE DATES" (with a full proposal deadline date of October 9, 2014), and "SYNOPSIS".

NSF National Science Foundation
WHERE DISCOVERIES BEGIN

QUICK LINKS

SEARCH

HOME FUNDING AWARDS DISCOVERIES NEWS PUBLICATIONS STATISTICS ABOUT NSF FASTLANE

Funding

Find Funding

A-Z Index of Funding Opportunities

Recent Funding Opportunities

Upcoming Due Dates

Advanced Funding Search

Interdisciplinary Research

How to Prepare Your Proposal

About Funding

Proposals and Awards

Proposal and Award Policies and Procedures Guide

Email Print Share

Division of Undergraduate Education

Advanced Technological Education (ATE)

CONTACTS

Name	Email	Phone	Room
V. Celeste Carter	vcarter@nsf.gov	703-292-4651	
David B. Campbell	dcampbel@nsf.gov	(703) 292-5093	885 S
David R. Brown	drbrown@nsf.gov	(703) 292-8831	835 N
Connie K. Della-Piana	cdellapi@nsf.gov	(703) 292-5309	835 N
R. Corby Hovis	chovis@nsf.gov	(703) 292-4625	835 N

PROGRAM GUIDELINES

Solicitation [14-577](#)

DUE DATES

Full Proposal Deadline Date: October 9, 2014

SYNOPSIS

Poll

As a prospective NSF ATE grantee, how would you describe yourself?

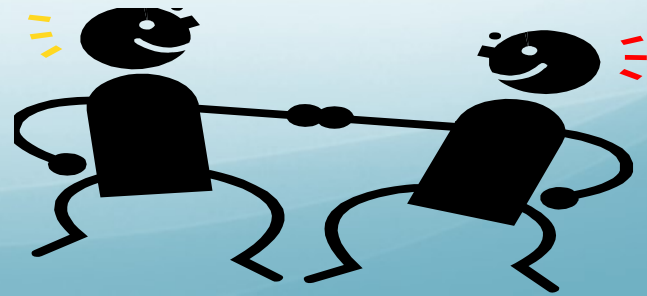
- A. New/inexperienced**
- B. New to NSF ATE, but have grant experience**
- C. Knowledgeable/confident with NSF grants**

Questions



History - Why Mentor-Connect?

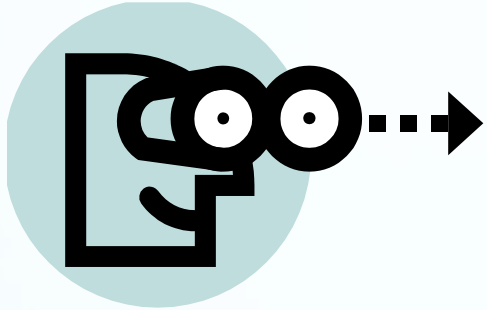
- Too few community colleges benefiting from NSF funding
- No preliminary proposals
- Complexity of “grantsmanship”
- Need for highly skilled technicians



History

- **ATE Community - shares**
- **ATE resources - abundant**
- **Mentoring pilot projects – successful**
- **Experienced PIs - willing to assist first-time applicants**
- **4 years of Mentor-Connect success!**

Mentor-Connect Vision



A regenerative mentoring system for leadership development & knowledge transfer to broaden the impact of the ATE Program.

Mentor-Connect Goals

- # of unique Community Colleges engaging with the ATE Program significantly expands and becomes more diversified
- Potential grantees receive targeted technical assistance and mentoring support



Mentor-Connect Goals

- Experienced grantees are prepared as Mentors
- On-line resources provide instruction and support for potential grantees



Big Picture!

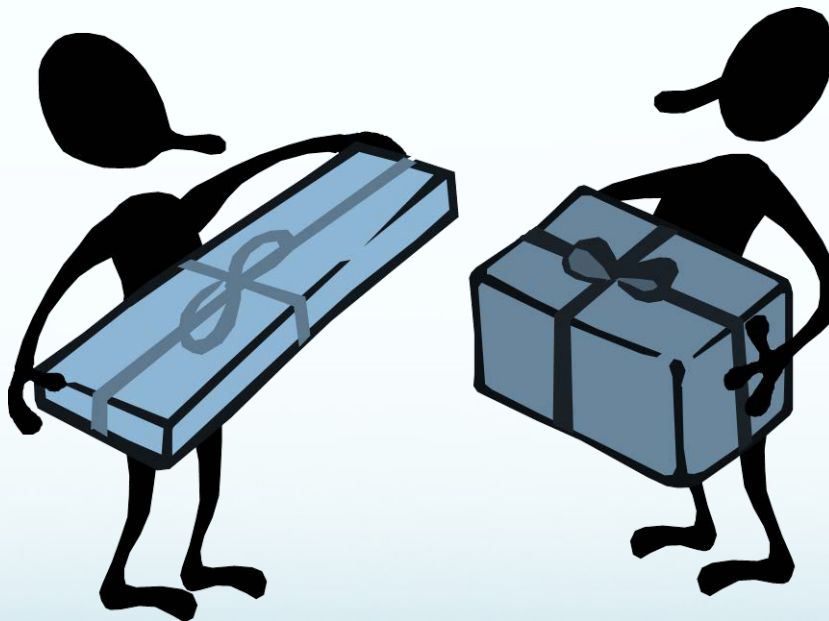
Mentor-Connect helps you compete for **NSF ATE \$** to:

- Strengthen **technician education** to meet STEM workforce needs
- Develop STEM faculty leadership in **technician education**

The Opportunity

Benefit from...

Contribute to...



The ATE Program

Mentor-Connect Assistance

Webinars

Workshops

Mentoring

Resources and Just-in-time help

Leadership Development



Cohort Structure

- 20 college teams selected each year (October)
- Comprised of 2 faculty and optional administrator(s)
- 10-month duration
- 2 in-person workshops (winter, summer)
- 1 professional development conference (summer)
- ≡ Expectation: submit a small, new-to-ATE grant proposal to NSF

Cohort Structure



Cohort Benefits

- A three-day winter grant-writing workshop
- An ATE-experienced mentor assigned to each team
- Technical assistance webinars (3 or more)
- One-day summer workshop & HI-TEC Conference
- Other resources and “help desk” support

Financial Support

- **Travel support:**

up to \$2400 (\$1200 each) for 2 faculty members to attend winter and summer workshops

- **Complimentary conference registration:**

High Impact Technology Exchange Conference (HI-TEC)

Mentor-Connect Assistance

Webinars

Workshops

Mentoring

Resources and Just-in-time help

Leadership Development



Winter Workshop



February 1-3, 2017, Hotel Monteleone, New Orleans, LA

- **Team work time with assigned mentors**
- **Grant-writing skills & tips for being competitive in NSF ATE program**
- **Mock panel review of grant proposals**
- **Leadership skills development via of becoming grantees**

Summer Workshop

July 16-20, 2017, at High Impact Technology Exchange Conference (HI-TEC), Salt Lake City, UT

- **Team work time with mentor**
- **Grant-writing technical assistance**
- **Advice from and networking with mentees who have been successful**

Mentor-Connect Assistance

Webinars

Workshops

Mentoring

Resources and Just-in-time help

Leadership Development



Who is Eligible?

- ✓ **2-year technical and community colleges**
 - ...No ATE grant funding in the past 10 years
- ✓ **STEM faculty**
 - ...Who prepare technicians for the U.S. workforce
- ✓ **Limit: one team application per eligible college**

Who is Encouraged?

Especially encouraged to participate:

Rural colleges

Diverse STEM Faculty (underrepresented)

Female

Hispanic/Latino

African-American

Alaskan Native/Native American

Poll

What is your current role at your institution?

- A. Faculty**
- B. Administrator**
- C. Grant writer**
- D. None of the above**

Teamwork Encouraged

Up to two Sponsored Research Officers (SRO), Grant Writers or Supportive Administrators Invited



Teamwork Encouraged

- **Attend winter workshop with college team**

Investment: \$395 registration fee & provide own travel support

- **Grant writer and administrator track offered**
- **Benefit from mentoring during the workshop & thereafter**
- **Access to Mentor-Connect resources**



Cohort 1

Portland, Oregon



Cohort 2

Atlanta, Georgia



Cohort 3

St. Petersburg, Florida



Cohort 4

New Orleans, Louisiana

Success Data - Outreach

- 4 Cohorts: 79 Colleges
- 27 States
- 162 Faculty
- 86 Administrators
- 25 Mentors (10/cohort)

Success Data - Participants

- **NSF ATE proposal submissions:**
18/20 per cohort (90%)
- **NSF awards (Mentees from our program):**
37/54 to-date; 69% success (overall), 76% small grant success
- 64% of Mentor-Connect applicants accepted into a cohort
- 100% colleges re-applying for Mentor-Connect are selected for a cohort (9 to-date)

Questions



How to Apply

Access application package:

www.Mentor-Connect.org

Available NOW!

Submit:

Electronic Application

College Affidavit

Selection Process

Each applicant is offered Mentor-Connect help

- **20 colleges will be selected for Mentor-Connect Cohort 5**
Notification on November 4, 2016
- **Those not selected receive:**
 - Opportunity for one-on-one consultation**
 - Invitations to technical assistance webinars**
 - Access to online resources**

Selection Criteria

- Application is complete
- College is “small grant” eligible
- Good idea with clear technician education focus

Selection Criteria

- STEM faculty team, highly interested*
- Geographic diversity of institution
- Demographic diversity of faculty team members/
Students

* Note: faculty are not required to have a doctorate degree.

Initial Expectations...

- **Read acceptance or decline letter thoroughly**
- **Register and prepare for winter workshop (or if declined, sign up for consultation)**
- **Early contact with assigned mentor**
- **Ask questions**

Your Mentor's Role

- Assist teams during workshop
- ~36 hrs. customized mentoring/consulting
- Proposal guidance
 - Strengthen proposal topics
 - Refine ideas & strategies
 - Provide links to ATE resources/people
 - Help in addressing NSF & ATE requirements



Our 2016 Mentors



Poll

Do you plan to apply for Mentor-Connect this year?

- A. Yes**
- B. No**
- C. Maybe, but not sure**

Bad Timing?

Now....

Or Later?

Mentor-Connect options



Mentor-Connect Assistance

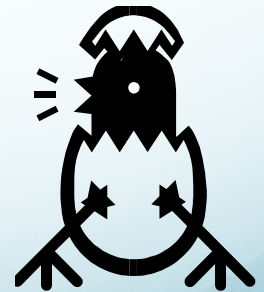
Webinars

Workshops

Mentoring

Resources and Just-in-time help

Leadership Development



Resources

- **200+ self-help resource library available online including templates, samples, checklists, guidelines, tutorials and more related to grant proposals**
- **Frequently Asked Questions**
- **Glossary of terms**

Mentor-Connect Assistance

Webinars

Workshops

Mentoring

Resources and Just-in-time help

Leadership Development



Mentor-Connect Timeline

What?	When?	Where?
Access & Complete Application	July 1- October 13, 2016	www.Mentor-Connect.org
Application Deadline	October 13, 2016 5 p.m. EST	Mentor-connect@fdtc.edu or Fax 843-676-8548
Selection notification	November 4	Via email to applicants

Mentor-Connect Timeline

What?	When?	Where?
Registration for Technical Assistance Workshop	November 4-December 16	Instructions with notification of selection for Cohort 5
Winter Workshop	February 1-3, 2017	Hotel Monteleone New Orleans, LA
Summer Workshop	July 16-20, 2017	Salt Lake City, UT
Technical Assistance Webinars - Evaluation - Forms - Budgets	Spring 2017 - TBD - May 11 - February 23	Web link

Questions



Connect with Mentor-Connect

www.Mentor-Connect.org



Mentor-Connect@fdtc.edu



ATEMentorConnect



@Mentor_Connect

Webinar Survey



Please take a moment to help us become better:

{insert link}

Mentor-Connect@fdtc.edu



Leadership Development and Outreach for ATE

NSF DUE # 1501183

Elaine Craft, Principal Investigator

Charlotte Forrest, Project Manager & Co-Principal Investigator

SC ATE Center of Excellence

Florence-Darlington Technical College - Florence, SC 29501-0548

